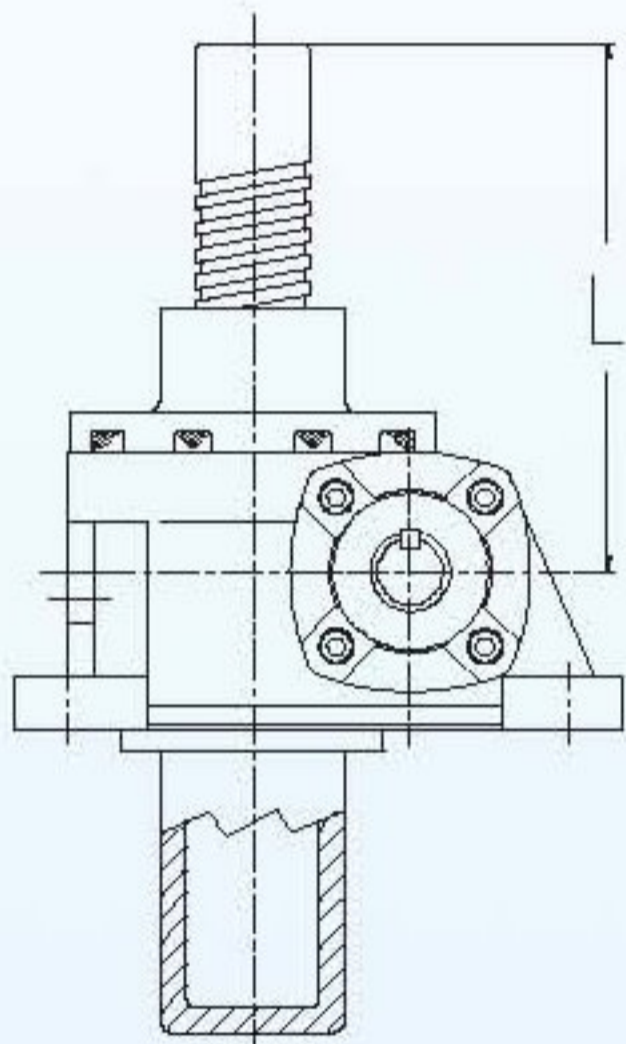




容許彎曲負荷值 (各種型號及負荷方式與有關牙桿長度以及容許彎曲負荷計算可參考下列各表及計算公式。
Bending Tolerance Range (loading way, screw rod length and bending tolerance range refer to following tables and formula)

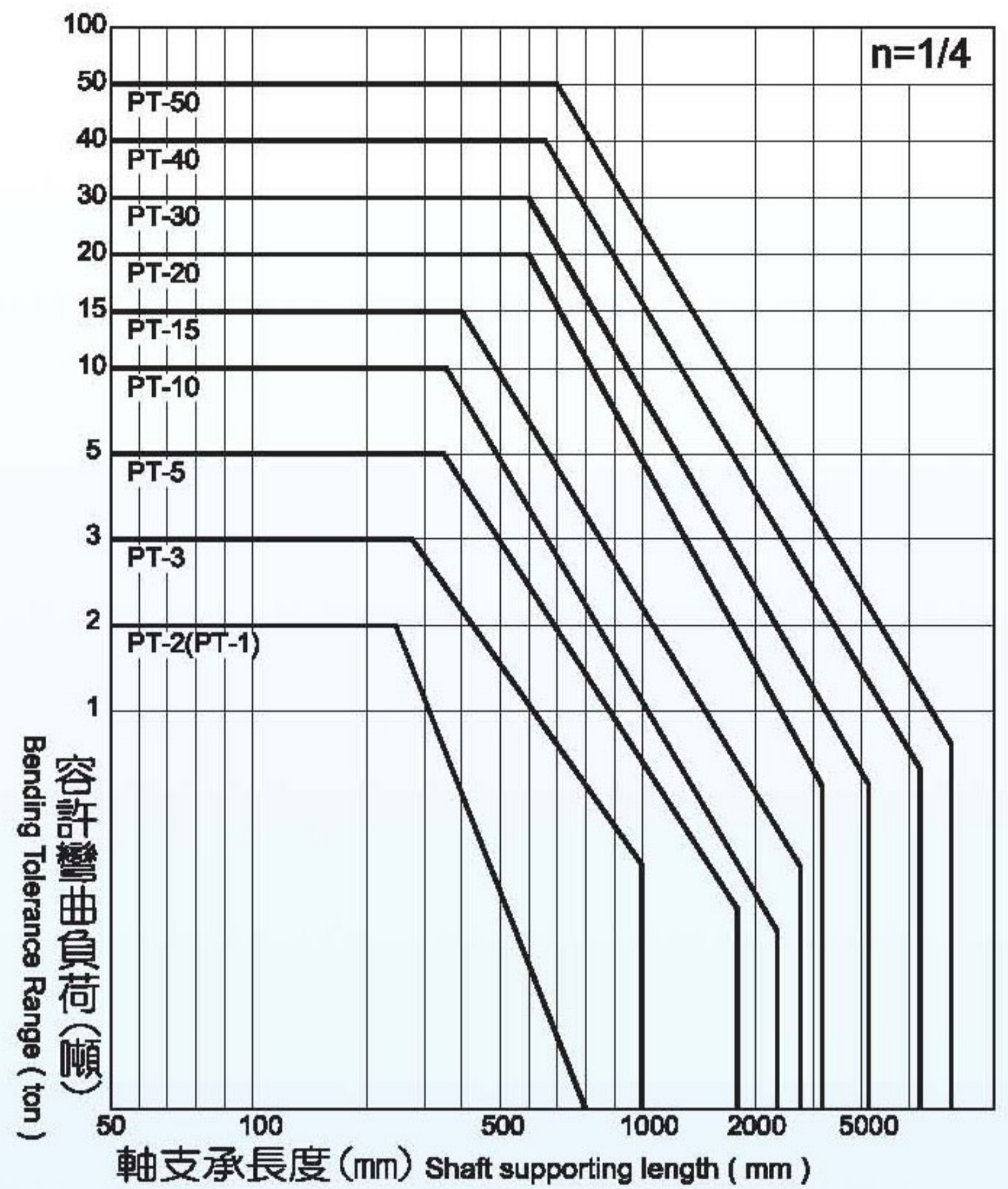
$$P_{cr} = n\pi^2 E (k/l)^2 \cdot A \cdot \alpha$$

| | | |
|----|---|--|
| n | 軸端支承因數 supporting factor on shaft end | 1/4, 1, 2 |
| E | 縱向彈性模數 lengthwise elastic modulus | (2.1x10 ⁴ kgf/mm ²) |
| K | 最小輔助半徑 minimum auxiliary radius | K = d1 / 4 |
| d1 | 螺紋底直徑 bottom diameter of the thread | 19.9 ~ 81.0 |
| L | 軸支承長度 shaft supporting length, as demand | 視需求 |
| A | 螺桿之螺紋底直徑的斷面積 cross-section square measure of the thread bottom diameter of the screw rod | A = π (d1) ² / 4 |
| α | 安全係數 safe factor | α = 0.25 |

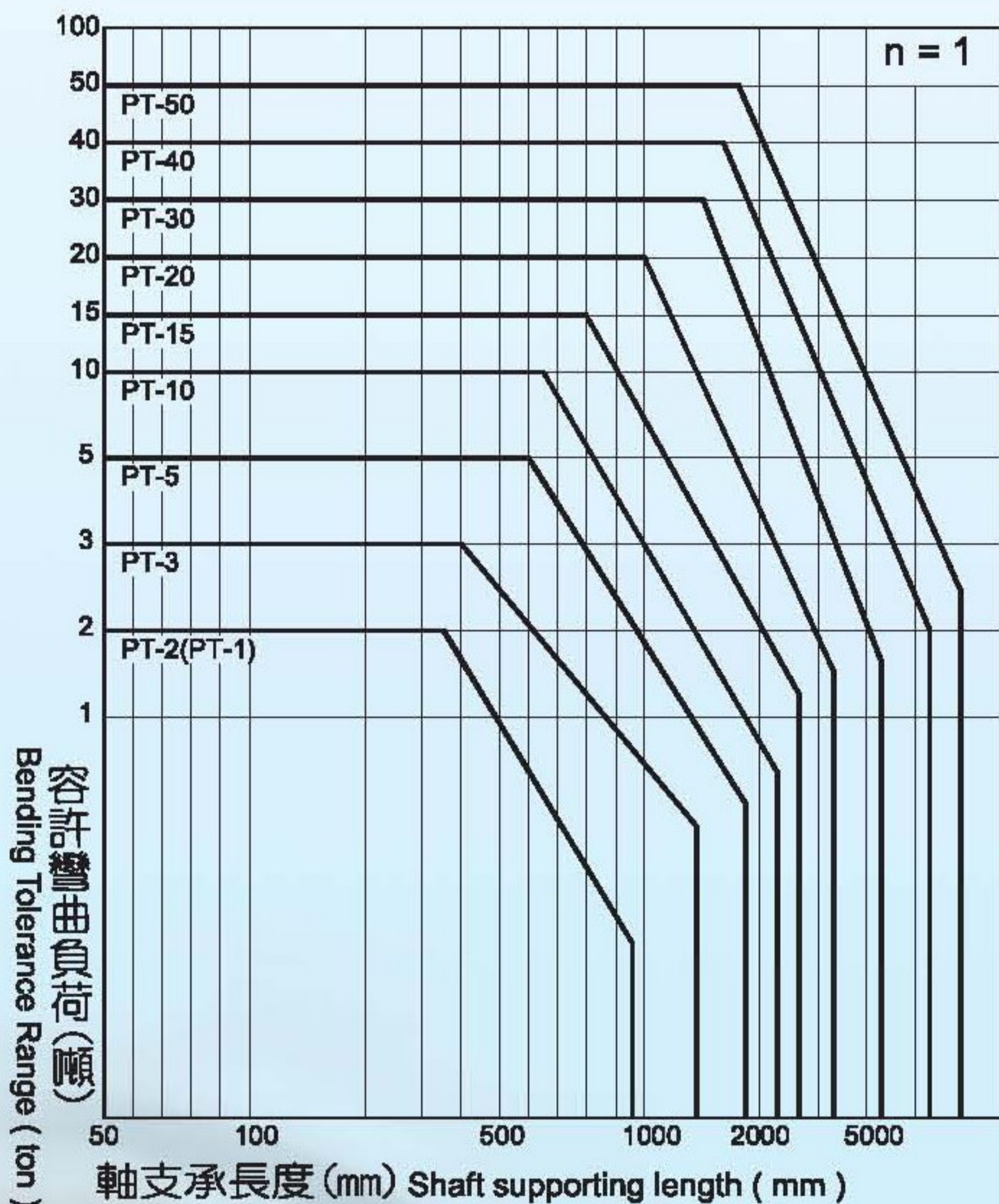


螺紋底直徑(d1) :
bottom diameter of the thread (d1)

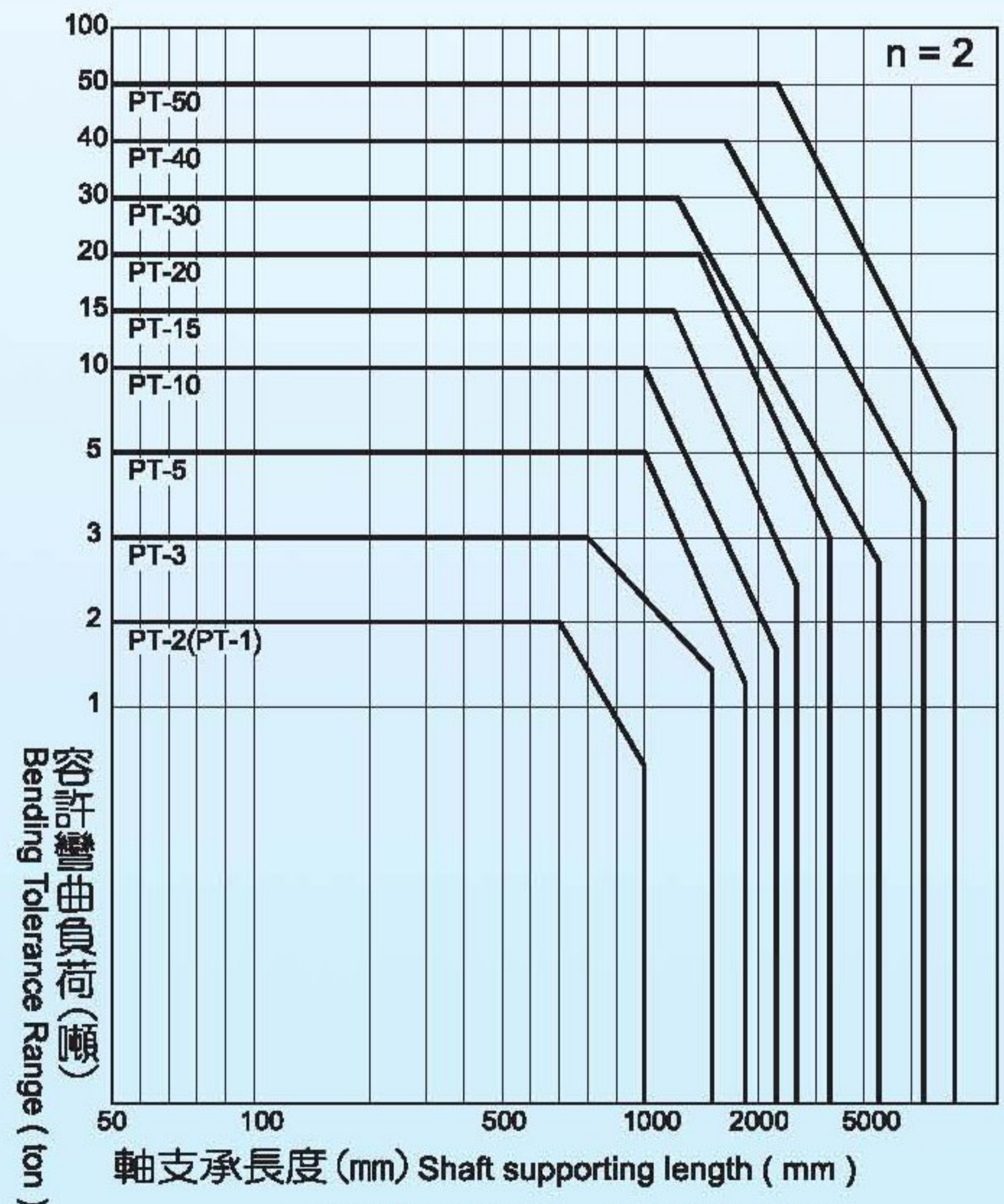
- PT-1 - (19.9)
- PT-2 - (19.9)
- PT-3 - (25.2)
- PT-5 - (31.5)
- PT-10 - (35.9)
- PT-15 - (42.3)
- PT-20 - (53.0)
- PT-30 - (63.7)
- PT-50 - (81.0)



千斤頂固定—軸端游離
Fix by a Jack - free shaft end



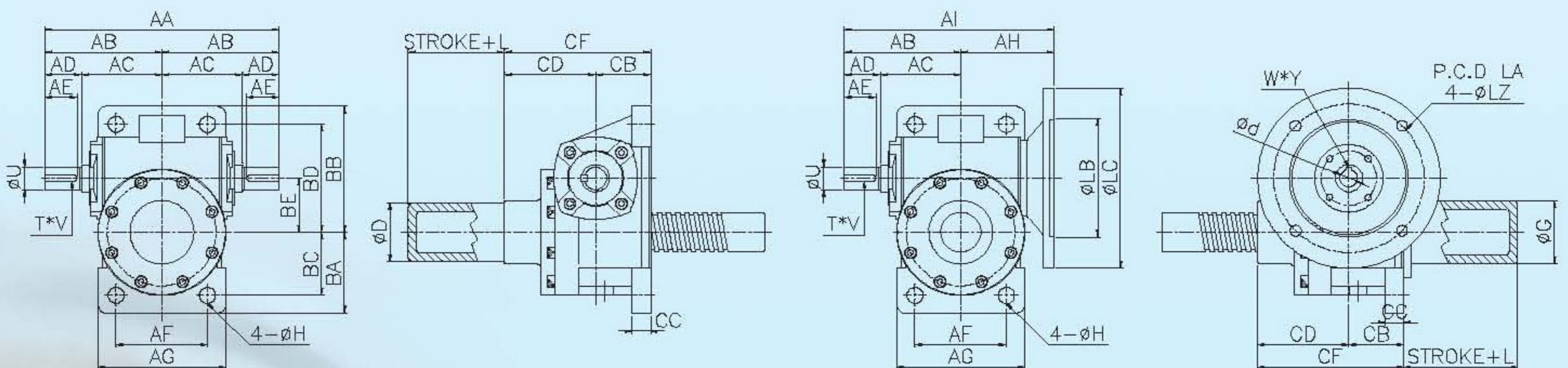
千斤頂支承—軸端支承
Supported by a Jack - supported at the end of shaft



千斤頂固定—頂板固定
Fix by a Jack - fixed at the top plate



| 型號 type | PT-1 | PT-2 | PT-3 | PT-5 | PT-10 | PT-15 | PT-20 | PT-30 | PT-50 |
|--|------|-----------------------------|-----------------------------|-----------------------------|---------------------------|---------------------------|---------------------------|---------------------------|--------------------------------|
| 方螺紋 Square thread | 1" | 1" | 1 1/4" | 1 1/2" | 1 3/4" | 2" | 2 1/2" | 3" | 4" |
| 直徑 Diameter | ACME | ACME | ACME | ACME | ACME | ACME | ACME | ACME | ACME |
| 螺距 Thread pitch | P=5 | P=5 | P=6 | P=6 | P=8 | P=8 | P=10 | P=12 | P=20 |
| 蝸輪 Worm gear | 1/5 | 1/5 | 1/6 | 1/6 | 1/8 | 1/8 | 1/10 | 1/12 | 1/10 |
| 減速比 deaccelrating ratio | 1/10 | 1/10 | 1/12 | 1/12 | 1/16 | 1/16 | 1/20 | 1/18 | 1/20 |
| | 1/20 | 1/20 | 1/24 | 1/24 | 1/32 | 1/32 | 1/40 | 1/36 | 1/40 |
| AA | 140 | 170 | 220 | 220 | 256 | 264 | 316 | 390 | 522 |
| AB | 70 | 85 | 110 | 110 | 128 | 132 | 158 | 195 | 261 |
| AC | 40 | 55 | 70 | 70 | 88 | 92 | 108 | 130 | 196 |
| AD | 30 | 30 | 40 | 40 | 40 | 40 | 50 | 65 | 65 |
| AE | 25 | 25 | 35 | 35 | 35 | 35 | 45 | 55 | 60 |
| AF | 80 | 66 | 80 | 90 | 100 | 110 | 140 | 160 | * |
| AG | 102 | 90 | 110 | 120 | 140 | 150 | 180 | 210 | * |
| AH | * | 75 | 100 | 101 | 103 | 113 | 128 | 140 | 240 |
| AI | * | 160 | 210 | 211 | 231 | 245 | 286 | 335 | 501 |
| BA | 44 | 50 | 57 | 60 | 90 | 90 | 95 | 115 | * |
| BB | 74 | 85 | 98 | 110 | 140 | 140 | 155 | 180 | 261 |
| BC | 32 | 38 | 42 | 45 | 70 | 70 | 75 | 90 | * |
| BD | 62 | 73 | 83 | 95 | 120 | 120 | 135 | 155 | 235 |
| BE | 30 | 35 | 40 | 50 | 60 | 60 | 70 | 80 | 135 |
| CB | 38 | 40 | 50 | 50 | 60 | 60 | 70 | 80 | 110 |
| CC | 13 | 15 | 18 | 18 | 20 | 20 | 25 | 30 | 32 |
| CD | 52 | 70 | 80 | 80 | 100 | 100 | 110 | 130 | 130 |
| CF | 90 | 110 | 130 | 130 | 160 | 160 | 180 | 210 | 240 |
| ϕD | * | 48 | 57 | 60 | 70 | 82.6 | 101.5 | * | * |
| ϕG | * | 42 | 54 | 63.5 | 76 | 82.6 | 105 | * | * |
| ϕU | 14 | 15 | 18 | 18 | 25 | 25 | 28 | 32 | 48 |
| T*V | 5*3 | 5*3 | 5*3 | 5*3 | 7*4 | 7*4 | 7*4 | 10*5 | 12*5 |
| L | * | Stroke +55 | Stroke +60 | Stroke +60 | Stroke +65 | Stroke +65 | Stroke +75 | * | * |
| ϕLA | * | 130 | 130 | 130 | 165 | 165 | 165 | 215 | 265 |
| ϕLB | * | 110 | 110 | 110 | 130 | 130 | 130 | 180 | 230 |
| ϕLC | * | 160 | 160 | 160 | 200 | 200 | 200 | 250 | 300 |
| ϕLZ | * | M8 P1.25 | M8 P1.25 | M8 P1.25 | M10 P1.5 | M10 P1.5 | M10 P1.5 | M12 P1.75 | M16 P2.0 |
| $d\phi$ W*Y 直結馬力 direct horsepower | * | $\phi 11$ 5*2.3 1/4HP | $\phi 14$ 5*2.3 1/2HP | $\phi 14$ 5*2.3 1/2HP | $\phi 19$ 6*2.8 1HP | $\phi 19$ 6*2.8 1HP | $\phi 24$ 8*3.3 2HP | $\phi 28$ 8*3.3 3HP | $\phi 38$ 10*3.3 7 1/2HP |
| $d\phi$ W*Y 直結馬力 direct horsepower | * | * | * | * | $\phi 24$ 8*3.3 2HP | $\phi 24$ 8*3.3 2HP | * | * | * |
| H | 9 | 12 | 12 | 14 | 18 | 18 | 18 | 22 | 22 |





PEI GONG

蝸輪升降器

WORM GEAR LINEAR ACTUATOR

機型表示法 Type introduction

PT - **5** - **E** - **S** - **SAR** - **1/24** - **400** - **N**
 升降器 Linear 型號 Type 安裝方式 Mounting position 螺桿端型式 Screw rod end type 入力型式 power-inputting type 減速比 Decelerating 行程 Stroke 保護管 Protecting pipe

| Description 說明 | 型號 Type | 安裝方式 Mounting position | 螺桿端型式 Screw rod end type | 入力型式 power-inputting type | 減速比 Decelerating | 行程 Stroke | 保護管 Protecting pipe |
|-------------------|------------|---------------------------|-----------------------------|------------------------------|---------------------|--------------|------------------------|
| | 1 | A | S-牙口式 S tooth end type | SAR | 1/5 | 300 | N無 N non |
| | 2 | B | H-栓孔式 H bolt hole type | SAL | 1/6 | 400 | P裝配 P equipped |
| | 3 | C | R-平口式 R plain end type | SB | . | 500 | |
| | 5 | D | T-頂板式 T top plate type | MCR | . | . | |
| | 10 | E | | MCL | . | . | |
| | 15 | F | | MDR | 1/36 | . | |
| | 20 | | | MDL | 1/40 | . | |
| | 30 | | | | | | |
| | 50 | | | | | | |

入力型式 Power-inputting type

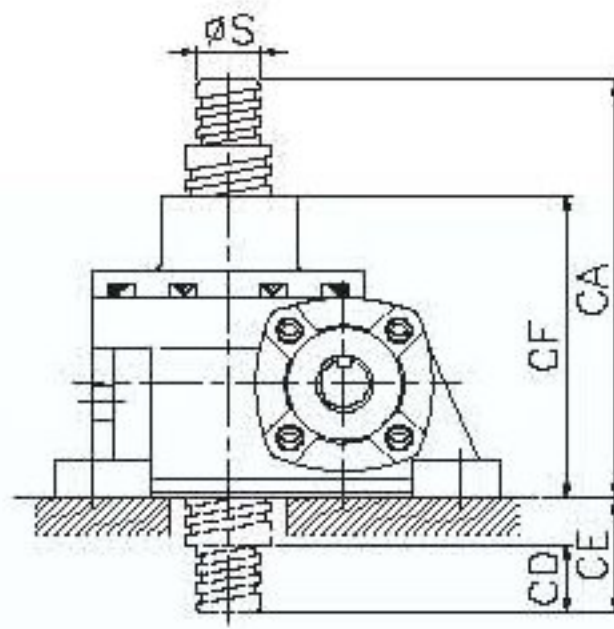
| SA · 單入力 One-way input | | SB · 雙入力 Two-way inputs | |
|--|--|--|--|
| R | L | | |
| 右側 (Right) | 左側 (Left) | | |
| | | | |
| MC · 直結單入 Direct one-way input | | MD · 直結雙入 Direct two-way inputs | |
| R | L | R | L |
| 法蘭右側 (Right) Right side of the flange | 法蘭左側 (Left) Left side of the flange | 法蘭右側 (Right) Right side of the flange | 法蘭左側 (Left) Left side of the flange |
| | | | |

安裝方式 Mounting position

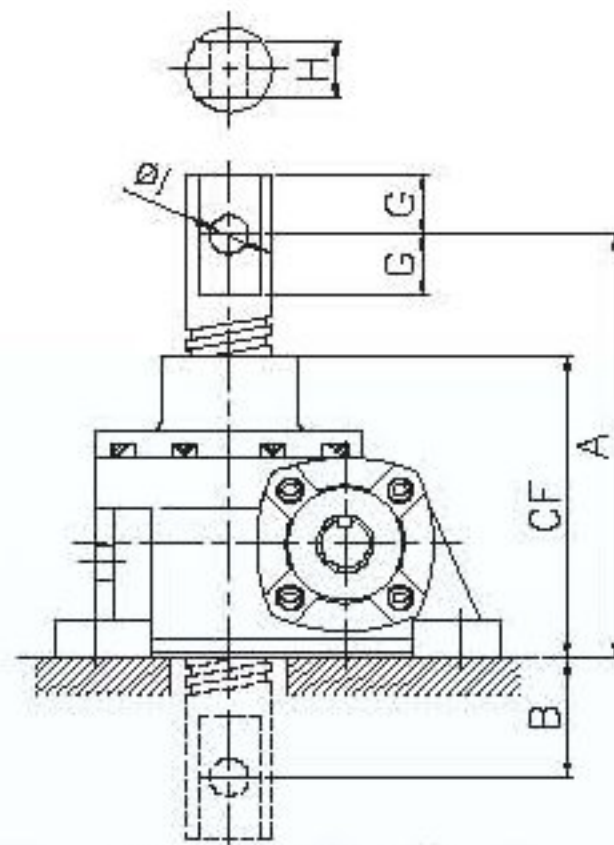
| | | |
|---|--|---|
| <p>以舉昇量使螺桿接頭不致轉動 Fix the screw rod connector with lift force</p> <p>(A) 護管直立式 protecting pipe vertical type</p> <p>(B) 護管倒立式 protecting pipe upside down type</p> | <p>以楔子固定升降螺桿使之不致轉動 (牙桿可上下，不旋轉) Fix the screw rod connector with wedge (screw rod can up and down but cannot rotate)</p> <p>(C) 鎖定直立式 lock vertical type</p> <p>(D) 鎖定倒立式 lock upside down type</p> | <p>螺桿旋轉—外活動螺帽必須與升降機件接合 昇降機件應予固定使之一致轉動 screw rod rotate—Outer movable nut must connect with actuator components and actuator components must be fixed to make it rotating as an unity</p> <p>(E) 旋轉直立式 rotating vertical type</p> <p>(F) 旋轉倒立式 rotating upside down type</p> |
|---|--|---|



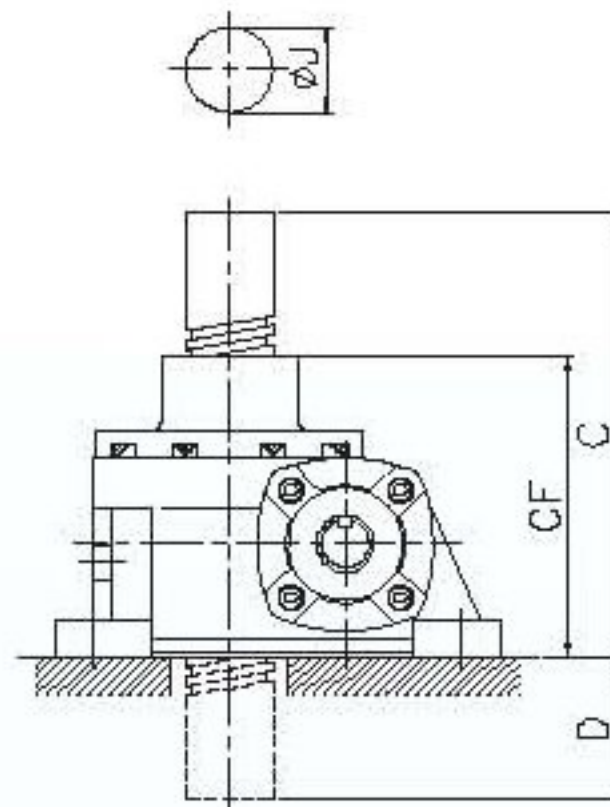
螺桿端型式 Screw rod end type



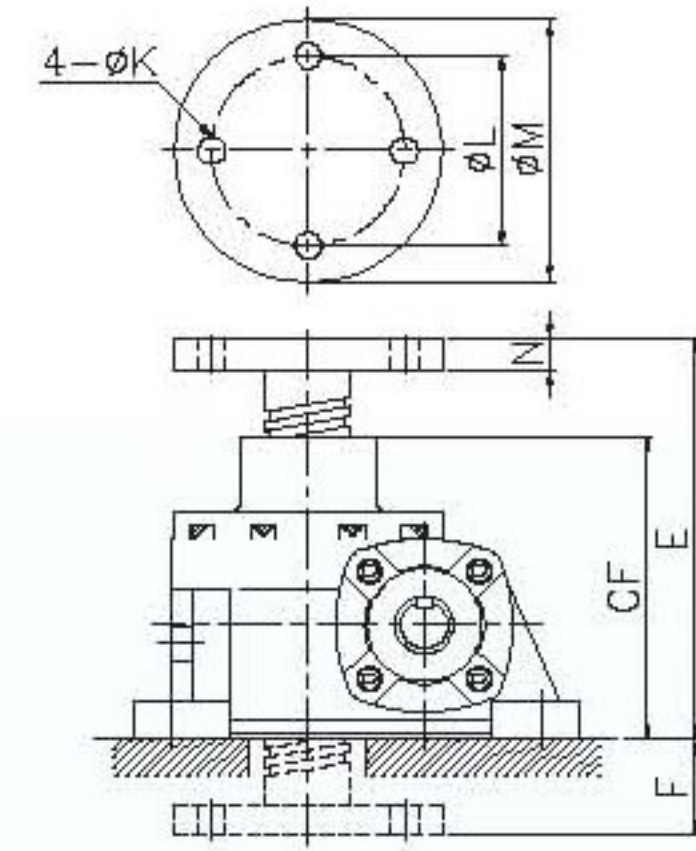
S型【牙口式】
S type [tooth end type]



H型【栓孔式】
H type [bolt hole type]



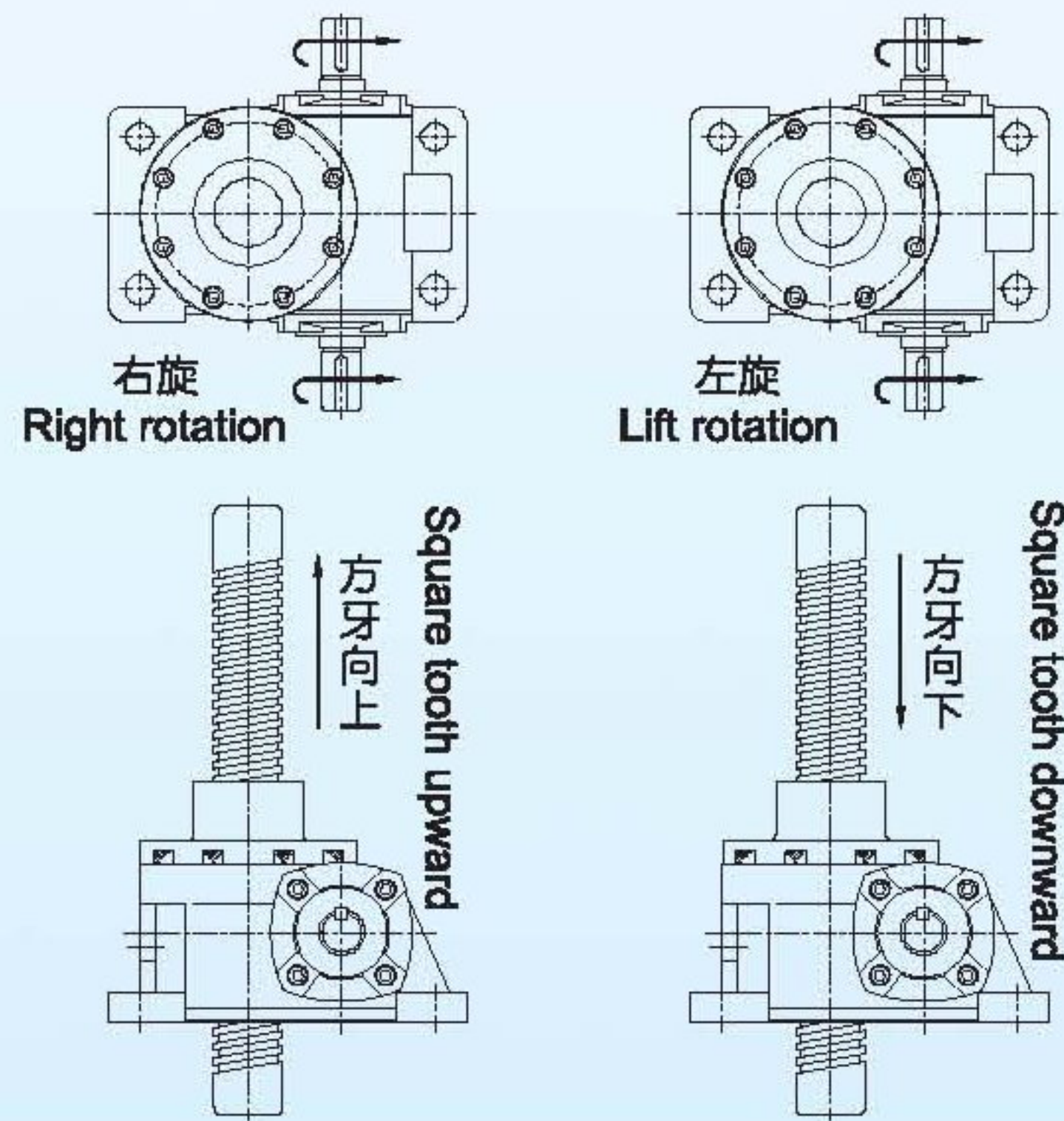
R型【平口式】
R type [plain end type]



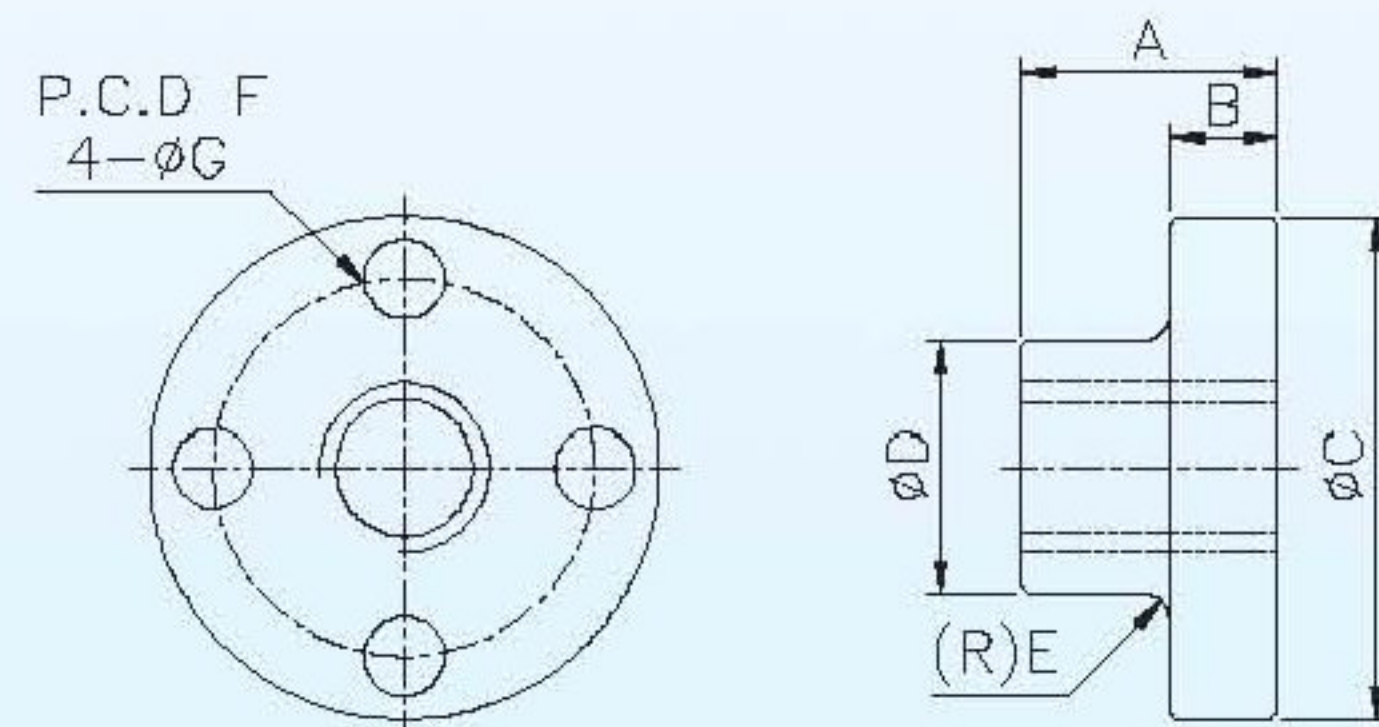
T型【頂板式】
T type [top plate type]

| 型號 type | A | B | C | CA | CD | CE | CF | D | E | F | G | H | I | J | K | L | M | N | S | |
|---------|-----|-----|-----|-----|----|----|-----|----|-----|----|----|----|----|--------|----|-----|-----|----|----------|-------------|
| PT-1 | 110 | 55 | 145 | 130 | 28 | 40 | 90 | 55 | 115 | 25 | 20 | 16 | 12 | 1" | 10 | 70 | 90 | 10 | M16*P2 | 5/8"-18NF |
| PT-2 | 130 | 55 | 165 | 150 | 28 | 40 | 110 | 55 | 135 | 25 | 20 | 16 | 12 | 1" | 10 | 70 | 90 | 10 | M16*P2 | 5/8"-18NF |
| PT-3 | 155 | 65 | 165 | 180 | 32 | 50 | 130 | 65 | 160 | 30 | 25 | 20 | 14 | 1 1/4" | 10 | 80 | 100 | 13 | M22*P2.5 | 7/8"-14NF |
| PT-5 | 155 | 65 | 195 | 180 | 35 | 50 | 130 | 65 | 160 | 30 | 25 | 25 | 16 | 1 1/2" | 12 | 90 | 115 | 13 | M27*P3 | 1 1/8"-12NF |
| PT-10 | 200 | 95 | 225 | 220 | 40 | 60 | 160 | 65 | 200 | 40 | 32 | 32 | 20 | 1 3/4" | 14 | 100 | 140 | 16 | M30*P3.5 | 1 1/4"-12NF |
| PT-15 | 200 | 95 | 225 | 220 | 45 | 60 | 160 | 65 | 210 | 50 | 32 | 36 | 24 | 2" | 18 | 110 | 150 | 20 | M36*P4 | 1 1/2"-12NF |
| PT-20 | 240 | 114 | 250 | 260 | 55 | 80 | 180 | 70 | 235 | 55 | 35 | 44 | 26 | 2 1/2" | 21 | 125 | 180 | 25 | M45*P4.5 | 1 3/4"-12NF |
| PT-30 | 280 | 135 | 285 | 290 | 65 | 80 | 210 | 75 | 275 | 65 | 44 | 58 | 35 | 3" | 21 | 140 | 190 | 28 | M56*P5.5 | 2 1/4"-12NF |

旋向與昇降關係參考圖 Reference drawings for the relationship between rotating direction and up-and-down movement



活動螺帽參考尺寸 Movable nut size reference



| 型號 type | A | B | C | D | E | F | G |
|---------|-----|----|-----|-----|---|-----|----|
| PT-1 | 38 | 16 | 76 | 38 | 4 | 57 | 12 |
| PT-2 | 38 | 16 | 76 | 38 | 4 | 57 | 12 |
| PT-3 | 44 | 18 | 94 | 48 | 4 | 72 | 14 |
| PT-5 | 50 | 20 | 114 | 58 | 5 | 86 | 14 |
| PT-10 | 75 | 32 | 134 | 68 | 5 | 100 | 18 |
| PT-15 | 85 | 35 | 150 | 78 | 5 | 115 | 18 |
| PT-20 | 100 | 40 | 180 | 90 | 5 | 135 | 21 |
| PT-30 | 120 | 50 | 190 | 100 | 5 | 145 | 21 |
| PT-50 | 150 | 60 | 230 | 130 | 5 | 180 | 24 |

NOTE:



入力軸馬力與負載及昇降速度關係 Input Horsepower and Lifting Load. Lifting Speed Continued

I.H : INPUT HP L.L : LIFTING LOAD (kg) DL : DOWNING LOAD (kg) L.S : LIFTING SPEED (mm/min)
 I.H : 輸入馬力(HP) L.L : 舉昇負荷(kg) DL : 垂降負荷(kg) L.S : 舉昇速度(mm/min)

| 型號 type | 方螺紋 Square thread 直徑 Diameter 螺距 Thread pitch | 減 速 比 | 1800 R.P.M 入力回轉數 Input rotation number | | | | 1500 R.P.M 入力回轉數 Input rotation number | | | | 1200 R.P.M 入力回轉數 Input rotation number | | | | 900 R.P.M 入力回轉數 Input rotation number | | | | 600 R.P.M 入力回轉數 Input rotation number | | | | 300 R.P.M 入力回轉數 Input rotation number | | | |
|------------|--|-------------|--|------|------|------|--|------|------|------|--|------|------|------|---|------|------|------|---|------|------|------|---|------|-------|-----|
| | | | I.H | L.L | D.L | L.S | I.H | L.L | D.L | L.S | I.H | L.L | D.L | L.S | I.H | L.L | D.L | L.S | I.H | L.L | D.L | L.S | I.H | L.L | D.L | L.S |
| PT-1 | ∅1" | 1/5 | 0.8 | 200 | 400 | 1800 | 0.7 | 225 | 450 | 1500 | 0.5 | 240 | 480 | 1200 | 0.4 | 260 | 520 | 900 | 0.3 | 275 | 550 | 600 | 0.16 | 285 | 570 | 300 |
| | ACME | 1/10 | 0.4 | 200 | 400 | 900 | 0.3 | 225 | 450 | 750 | 0.3 | 240 | 480 | 600 | 0.2 | 265 | 520 | 450 | 0.15 | 275 | 550 | 300 | 0.08 | 285 | 570 | 150 |
| | P=5 | 1/20 | 0.2 | 250 | 500 | 450 | 0.18 | 275 | 550 | 375 | 0.15 | 290 | 580 | 300 | 0.12 | 300 | 600 | 225 | 0.08 | 305 | 610 | 150 | 0.04 | 310 | 620 | 75 |
| PT-2 | ∅1" | 1/5 | 0.9 | 250 | 500 | 1800 | 0.9 | 275 | 550 | 1500 | 0.8 | 325 | 650 | 1200 | 0.7 | 425 | 850 | 900 | 0.5 | 475 | 950 | 600 | 0.5 | 475 | 950 | 300 |
| | ACME | 1/10 | 0.5 | 250 | 500 | 900 | 0.45 | 275 | 550 | 750 | 0.4 | 325 | 650 | 600 | 0.4 | 350 | 700 | 450 | 0.25 | 475 | 950 | 300 | 0.25 | 625 | 1250 | 150 |
| | P=5 | 1/20 | 0.5 | 300 | 600 | 450 | 0.45 | 350 | 700 | 375 | 0.4 | 425 | 850 | 300 | 0.4 | 575 | 1150 | 225 | 0.2 | 625 | 1250 | 150 | 0.25 | 625 | 1250 | 75 |
| PT-3 | ∅1 1/4" | 1/6 | 1.4 | 325 | 650 | 1800 | 1.35 | 375 | 750 | 1500 | 1.2 | 450 | 900 | 1200 | 1.1 | 600 | 1200 | 900 | 0.9 | 850 | 1700 | 600 | 0.56 | 850 | 1700 | 300 |
| | ACME | 1/12 | 0.9 | 450 | 900 | 900 | 0.9 | 500 | 1000 | 750 | 0.8 | 600 | 1200 | 600 | 0.7 | 775 | 1550 | 450 | 0.5 | 950 | 1900 | 300 | 0.5 | 950 | 1900 | 150 |
| | P=6 | 1/24 | 0.5 | 450 | 900 | 450 | 0.45 | 500 | 1000 | 375 | 0.4 | 600 | 1200 | 300 | 0.5 | 775 | 1550 | 225 | 0.3 | 950 | 1900 | 150 | 0.25 | 950 | 1900 | 75 |
| PT-5 | ∅1 1/2" | 1/6 | 1.9 | 425 | 850 | 1800 | 1.8 | 475 | 950 | 1500 | 1.6 | 550 | 1100 | 1200 | 1.4 | 700 | 1400 | 900 | 0.96 | 800 | 1600 | 600 | 0.72 | 975 | 1950 | 300 |
| | ACME | 1/12 | 1.5 | 625 | 1250 | 900 | 1.35 | 700 | 1400 | 750 | 1.2 | 850 | 1700 | 600 | 1.0 | 1000 | 2000 | 450 | 0.6 | 1000 | 2000 | 300 | 0.5 | 1175 | 2350 | 150 |
| | P=6 | 1/24 | 1 | 850 | 1700 | 450 | 0.9 | 950 | 1900 | 375 | 0.8 | 1125 | 2250 | 300 | 0.6 | 1200 | 2400 | 225 | 0.4 | 1350 | 2700 | 150 | 0.5 | 1350 | 2700 | 75 |
| PT-10 | ∅1 3/4" | 1/8 | 2.9 | 600 | 1200 | 1800 | 2.7 | 675 | 1350 | 1500 | 2.4 | 775 | 1550 | 1200 | 2.1 | 1000 | 2000 | 900 | 1.8 | 1425 | 2850 | 600 | 1.75 | 2250 | 4500 | 300 |
| | ACME | 1/16 | 1.5 | 600 | 1200 | 900 | 1.35 | 675 | 1350 | 750 | 1.2 | 775 | 1550 | 600 | 1.1 | 1025 | 2050 | 450 | 0.9 | 1425 | 2850 | 300 | 0.92 | 2250 | 4500 | 150 |
| | P=8 | 1/32 | 1 | 800 | 1600 | 450 | 0.9 | 900 | 1800 | 375 | 0.8 | 1050 | 2100 | 300 | 0.7 | 1300 | 2600 | 225 | 0.6 | 1900 | 3800 | 150 | 0.65 | 3000 | 6000 | 75 |
| PT-15 | ∅2" | 1/8 | 2.8 | 600 | 1200 | 1800 | 2.7 | 675 | 1350 | 1500 | 2.4 | 775 | 1550 | 1200 | 2.1 | 1000 | 2000 | 900 | 1.8 | 1425 | 2850 | 600 | 1.66 | 2250 | 4500 | 300 |
| | ACME | 1/16 | 1.5 | 600 | 1200 | 900 | 1.35 | 675 | 1350 | 750 | 1.2 | 775 | 1550 | 600 | 1.1 | 1025 | 2050 | 450 | 0.9 | 1425 | 2850 | 300 | 0.87 | 2250 | 4500 | 150 |
| | P=8 | 1/32 | 1 | 800 | 1600 | 450 | 0.9 | 900 | 1800 | 375 | 0.8 | 1050 | 2100 | 300 | 0.7 | 1300 | 2600 | 225 | 0.6 | 1900 | 3800 | 150 | 0.61 | 3000 | 6000 | 75 |
| PT-20 | ∅2 1/2" | 1/10 | 3.5 | 650 | 1300 | 1800 | 3.15 | 850 | 1700 | 1500 | 2.8 | 975 | 1950 | 1200 | 2.45 | 1150 | 2300 | 900 | 2.1 | 1575 | 3150 | 600 | 1.89 | 2275 | 4550 | 300 |
| | ACME | 1/20 | 1.9 | 750 | 1500 | 900 | 1.8 | 875 | 1750 | 750 | 1.6 | 1050 | 2100 | 600 | 1.4 | 1300 | 2600 | 450 | 1.2 | 1800 | 3600 | 300 | 1.15 | 2600 | 5200 | 150 |
| | P=10 | 1/40 | 1.5 | 1125 | 2250 | 450 | 1.35 | 1300 | 2600 | 375 | 1.2 | 1575 | 3150 | 300 | 1.1 | 2050 | 4100 | 225 | 0.9 | 2675 | 5350 | 150 | 0.9 | 3900 | 7800 | 75 |
| PT-30 | ∅3" | 1/12 | 5 | 850 | 1700 | 1800 | 4.5 | 1000 | 2000 | 1500 | 4 | 1225 | 2450 | 1200 | 3.5 | 1525 | 3050 | 900 | 3 | 2100 | 4200 | 600 | 2.7 | 3000 | 6000 | 300 |
| | ACME | 1/18 | 3.5 | 900 | 1800 | 1200 | 3.2 | 1075 | 2150 | 1000 | 2.8 | 1275 | 2550 | 800 | 2.5 | 1625 | 3250 | 600 | 2.1 | 2200 | 4400 | 400 | 2 | 3125 | 6250 | 200 |
| | P=12 | 1/36 | 2.2 | 1025 | 2050 | 600 | 2.1 | 1200 | 2400 | 500 | 2.1 | 1450 | 2900 | 400 | 1.4 | 1825 | 3650 | 300 | 1.2 | 2525 | 5050 | 200 | 1.5 | 4475 | 8950 | 100 |
| PT-50 | ∅4" | 1/10 | 13 | 975 | 1950 | 3600 | 12 | 1150 | 2300 | 3000 | 12 | 1325 | 2650 | 2400 | 12 | 1875 | 3750 | 1800 | 11 | 2550 | 5100 | 1200 | 7.5 | 3600 | 7200 | 600 |
| | ACME | 1/20 | 7.6 | 1100 | 2200 | 1800 | 8 | 1300 | 2600 | 1500 | 7.66 | 1525 | 3050 | 1200 | 6.8 | 2125 | 4250 | 900 | 6.6 | 2900 | 5800 | 600 | 4.6 | 4075 | 8150 | 300 |
| | P=20 | 1/40 | 5.5 | 1425 | 2850 | 900 | 5.2 | 1625 | 3250 | 750 | 5.1 | 1900 | 3800 | 600 | 4.4 | 2725 | 5450 | 450 | 4.5 | 3650 | 7300 | 300 | 3.1 | 5125 | 10250 | 150 |

| 型號 type | 直徑 Diameter | 螺距 Thread pitch | 行程 Stroke | 螺桿端 S 型 S type screw rod end | | 螺桿端 H 型 H type screw rod end | |
|------------|----------------|--------------------|-------------------------------|---|---|---|---|
| | | | 護管長 Protecting pipe length | 機身+CE+行程=螺桿總長 Machine length+CE+stroke= total length of screw rod | 螺桿總長-CE=牙長 total length of screw rod -CE=tooth length | 機身+B+G+行程=螺桿總長 Machine length+B+G+stroke= total length of screw rod | 螺桿總長-B-G=牙長 total length of screw rod -B-G=tooth length |
| PT-1 | 1" | P=5 | 300+60=360 | 90+40+300=430 | 430-40=390 | 90+55+20+300=465 | 465-55-20=390 |
| PT-2 | 1" | P=5 | 300+60=360 | 110+40+300=450 | 450-40=410 | 110+55+20+300=485 | 485-55-20=410 |
| PT-3 | 1 1/4" | P=6 | 300+60=360 | 130+50+300=480 | 480-50=430 | 130+65+25+300=520 | 520-65-25=430 |
| PT-5 | 1 1/2" | P=6 | 300+65=365 | 130+50+300=480 | 480-50=430 | 130+65+25+300=520 | 520-65-25=430 |
| PT-10 | 1 3/4" | P=8 | 300+65=365 | 160+60+300=520 | 520-60=460 | 160+95+32+300=587 | 587-95-32=460 |
| PT-15 | 2" | P=8 | 300+75=375 | 160+60+300=520 | 520-60=460 | 160+95+32+300=587 | 587-95-32=460 |
| PT-20 | 2 1/2" | P=10 | * | 180+80+300=560 | 560-80=480 | 180+114+35+300=629 | 629-144-35=480 |
| PT-30 | 3" | P=12 | * | 220+80+300=600 | 600-80=520 | 220+135+44+300=699 | 699-135-44=520 |
| PT-50 | 4" | P=20 | * | 315+120+300=735 | 735-120=615 | 315+165+64+300=844 | 844-165-64=615 |

| type 型號 | Diameter 直徑 | Thread pitch 螺距 | 螺桿端 R 型 R type screw rod end | | 螺桿端 T 型 T type screw rod end | |
|------------|----------------|--------------------|--|---|--|---|
| | | | 機身+D+行程=螺桿總長 Machine length+D+stroke length of screw rod | 螺桿總長-D=牙長 total length of screw rod-D =tooth length | 機身+F+行程=螺桿總長 Machine length+F+stroke=length of screw rod | 螺桿總長-F=牙長 total length of screw rod-F =tooth length |
| PT-1 | 1" | P=5 | 90+55+300=445 | 445-55=390 | 90+25+300=415 | 415-25=390 |
| PT-2 | 1" | P=5 | 110+55+300=465 | 465-55=410 | 110+25+300=435 | 435-25=410 |
| PT-3 | 1 1/4" | P=6 | 130+65+300=495 | 495-65=430 | 130+30+300=460 | 460-30=430 |
| PT-5 | 1 1/2" | P=6 | 130+65+300=495 | 495-65=430 | 130+30+300=460 | 460-30=430 |
| PT-10 | 1 3/4" | P=8 | 160+65+300=525 | 525-65=460 | 160+40+300=500 | 500-40=460 |
| PT-15 | 2" | P=8 | 160+65+300=525 | 525-65=460 | 160+50+300=510 | 510-50=460 |
| PT-20 | 2 1/2" | P=10 | 180+70+300=550 | 550-70=480 | 180+55+300=535 | 535-55=480 |
| PT-30 | 3" | P=12 | 220+75+300=595 | 595-75=520 | 220+65+300=585 | 585-65=520 |
| PT-50 | 4" | P=20 | 315+114+300=729 | 729-114=615 | 315+75+300=690 | 690-75=615 |

| | | |
|--|--|------------------------------|
| | <p>型號規格 Type specification</p> | <p>PT-1</p> |
| | <p>減速比 Decelerating ratio</p> | <p>1/5 1/10 1/20</p> |
| | <p>螺桿直徑 Screw rod diameter</p> | <p>φ 1"</p> |
| | <p>螺桿螺距 Screw rod thread pitch</p> | <p>P=5</p> |

| | | |
|--|--|------------------------------|
| | <p>型號規格 Type specification</p> | <p>PT-2</p> |
| | <p>減速比 Decelerating ratio</p> | <p>1/5 1/10 1/20</p> |
| | <p>螺桿直徑 Screw rod diameter</p> | <p>φ 1"</p> |
| | <p>螺桿螺距 Screw rod thread pitch</p> | <p>P=5</p> |

| | | |
|--|--|------------------------------|
| | <p>型號規格 Type specification</p> | <p>PT-3</p> |
| | <p>減速比 Decelerating ratio</p> | <p>1/6 1/12 1/24</p> |
| | <p>螺桿直徑 Screw rod diameter</p> | <p>φ 1-1/4"</p> |
| | <p>螺桿螺距 Screw rod thread pitch</p> | <p>P=6</p> |

| | | | | |
|---|--|--|---|------------------------------|
| <p>Direct type 【one-way input right side】 直結式【單入右側】</p> <p>雙入力【標準型】 Two-way input 【standard type】</p> | | | <p>型號規格 Type specification</p> | <p>PT-5</p> |
| <p>Direct type 【two-way input right side】 直結式【雙入右側】</p> | | | <p>減速比 Decelerating ratio</p> | <p>1/6 1/12 1/24</p> |
| <p>雙入力【標準型】 Two-way input 【standard type】</p> | | | <p>螺桿直徑 Screw rod diameter</p> | <p>φ 1-1/2"</p> |
| <p>Direct type 【two-way input right side】 直結式【雙入右側】</p> | | | <p>螺桿螺距 Screw rod thread pitch</p> | <p>P=6</p> |

| | | | | |
|---|--|--|---|------------------------------|
| <p>Direct type 【one-way input right side】 直結式【單入右側】</p> <p>雙入力【標準型】 Two-way input 【standard type】</p> | | | <p>型號規格 Type specification</p> | <p>PT-10</p> |
| <p>Direct type 【two-way input right side】 直結式【雙入右側】</p> | | | <p>減速比 Decelerating ratio</p> | <p>1/8 1/16 1/32</p> |
| <p>雙入力【標準型】 Two-way input 【standard type】</p> | | | <p>螺桿直徑 Screw rod diameter</p> | <p>φ 1-3/4"</p> |
| <p>Direct type 【two-way input right side】 直結式【雙入右側】</p> | | | <p>螺桿螺距 Screw rod thread pitch</p> | <p>P=8</p> |

| | | | | |
|---|--|--|---|------------------------------|
| <p>Direct type 【one-way input right side】 直結式【單入右側】</p> <p>雙入力【標準型】 Two-way input 【standard type】</p> | | | <p>型號規格 Type specification</p> | <p>PT-15</p> |
| <p>Direct type 【two-way input right side】 直結式【雙入右側】</p> | | | <p>減速比 Decelerating ratio</p> | <p>1/8 1/16 1/32</p> |
| <p>雙入力【標準型】 Two-way input 【standard type】</p> | | | <p>螺桿直徑 Screw rod diameter</p> | <p>φ 2"</p> |
| <p>Direct type 【two-way input right side】 直結式【雙入右側】</p> | | | <p>螺桿螺距 Screw rod thread pitch</p> | <p>P=8</p> |

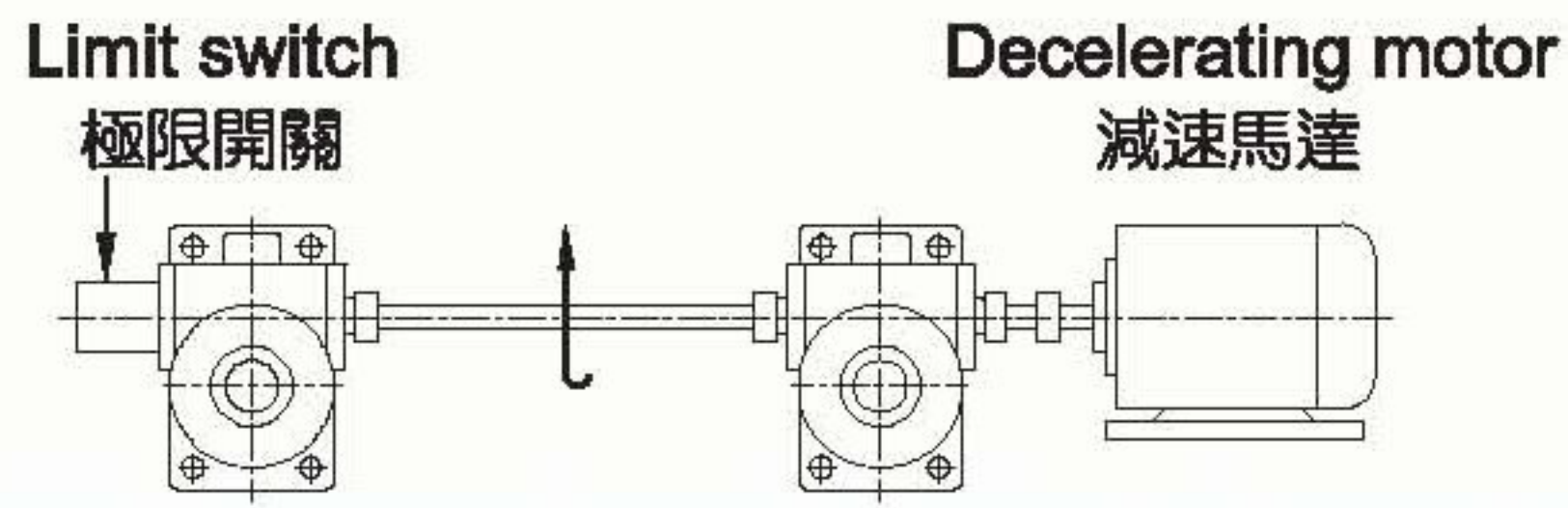


| | | |
|---|---|---|
| <p>Direct type 【one-way input right side】 直結式【單入右側】</p> | | <p>型號規格 Type specification</p> <p>PT-20</p> |
| <p>雙入力【標準型】 Two-way input 【standard type】</p> <p>直結式【雙入右側】 Direct type 【two-way input right side】</p> | <p>減速比 Decelerating ratio</p> <p>1/10 1/20 1/40</p> | <p>螺桿直徑 Screw rod diameter</p> <p>$\phi 2-1/2''$</p> |
| | <p>螺桿螺距 Screw rod thread pitch</p> <p>P=10</p> | |

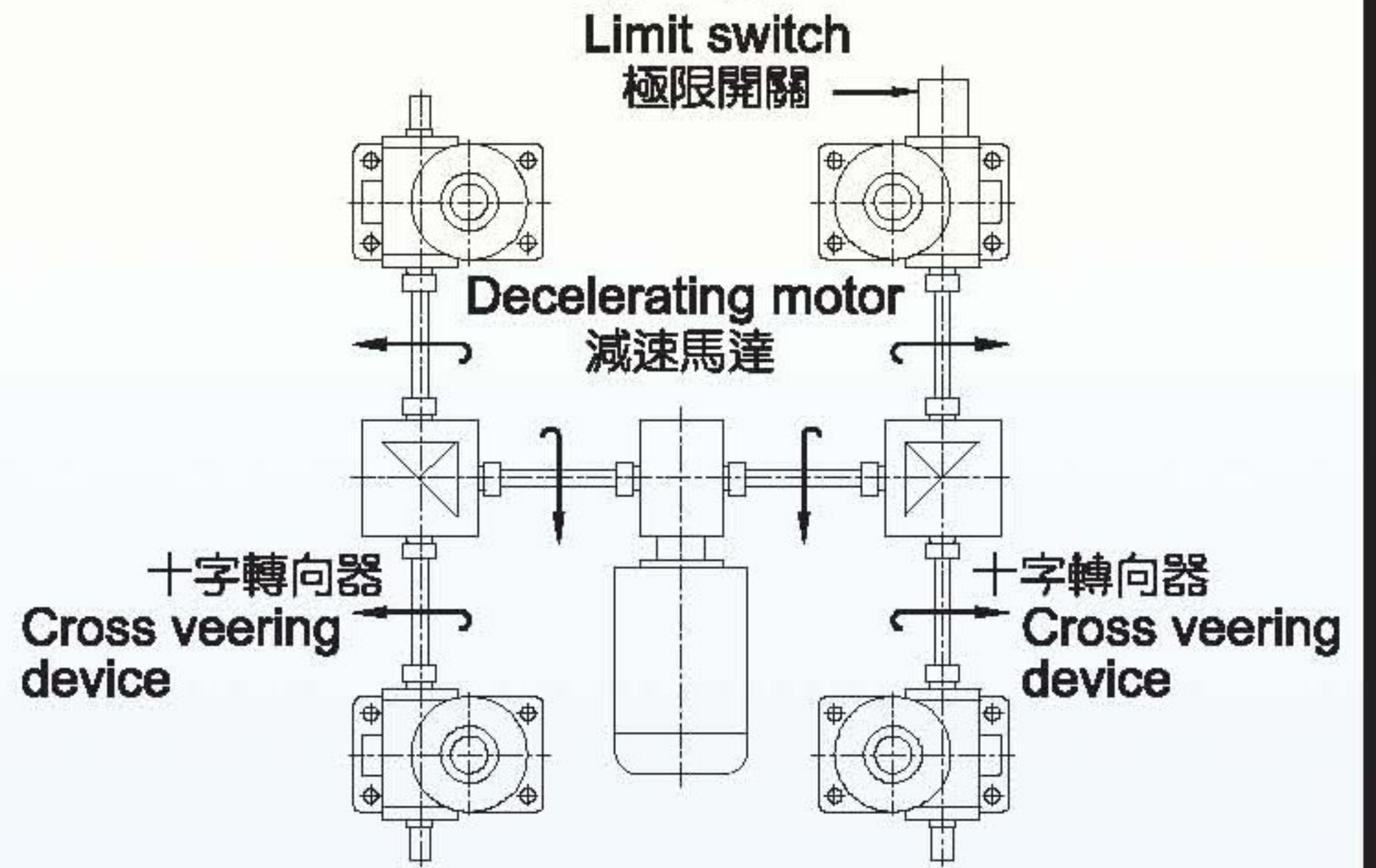
| | | |
|---|---|---|
| <p>Direct type 【one-way input right side】 直結式【單入右側】</p> | | <p>型號規格 Type specification</p> <p>PT-30</p> |
| <p>雙入力【標準型】 Two-way input 【standard type】</p> <p>直結式【雙入右側】 Direct type 【two-way input right side】</p> | <p>減速比 Decelerating ratio</p> <p>1/12 1/18 1/36</p> | <p>螺桿直徑 Screw rod diameter</p> <p>$\phi 3''$</p> |
| | <p>螺桿螺距 Screw rod thread pitch</p> <p>P=12</p> | |

| | | |
|---|---|---|
| <p>Direct type 【one-way input right side】 直結式【單入右側】</p> | | <p>型號規格 Type specification</p> <p>PT-50</p> |
| <p>雙入力【標準型】 Two-way input 【standard type】</p> <p>直結式【雙入右側】 Direct type 【two-way input right side】</p> | <p>減速比 Decelerating ratio</p> <p>1/10 1/20 1/40</p> | <p>螺桿直徑 Screw rod diameter</p> <p>$\phi 4''$</p> |
| | <p>螺桿螺距 Screw rod thread pitch</p> <p>P=20</p> | |

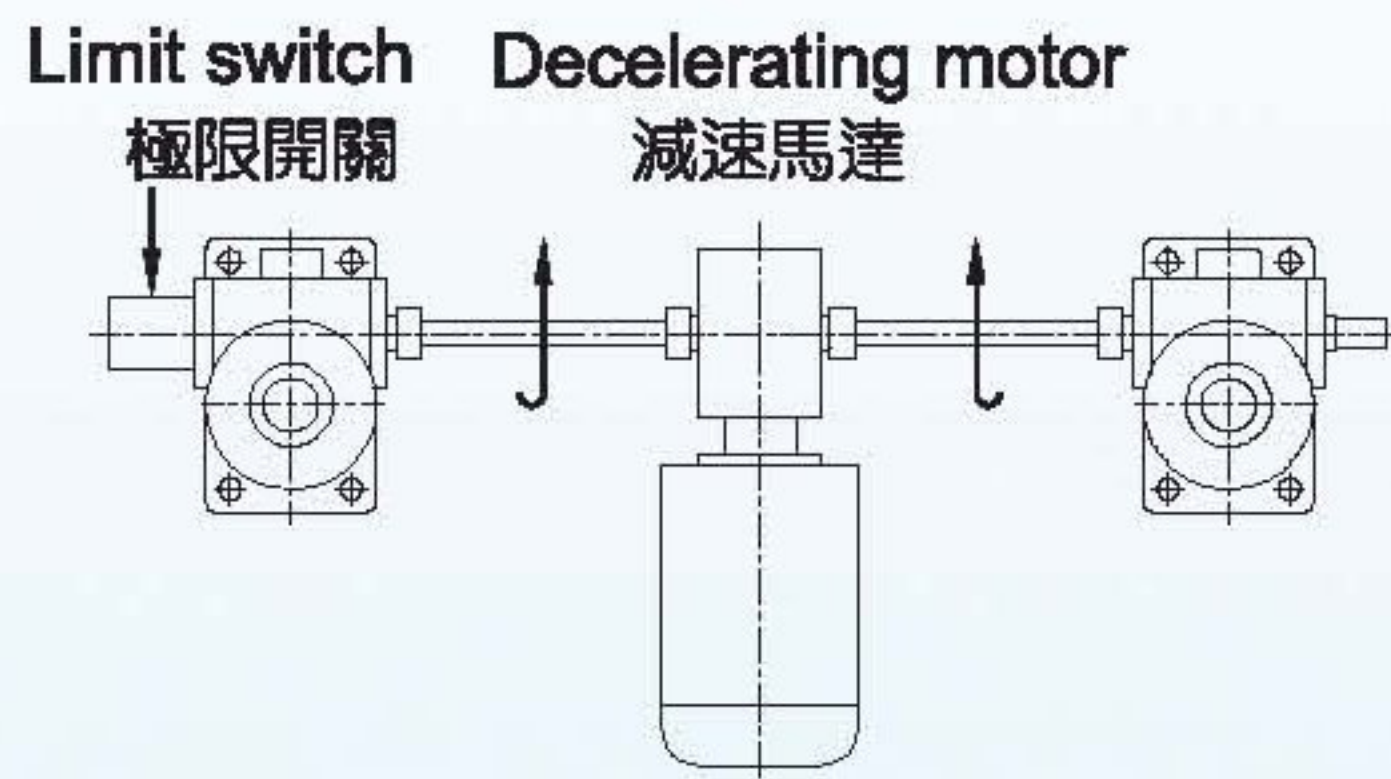
【I】



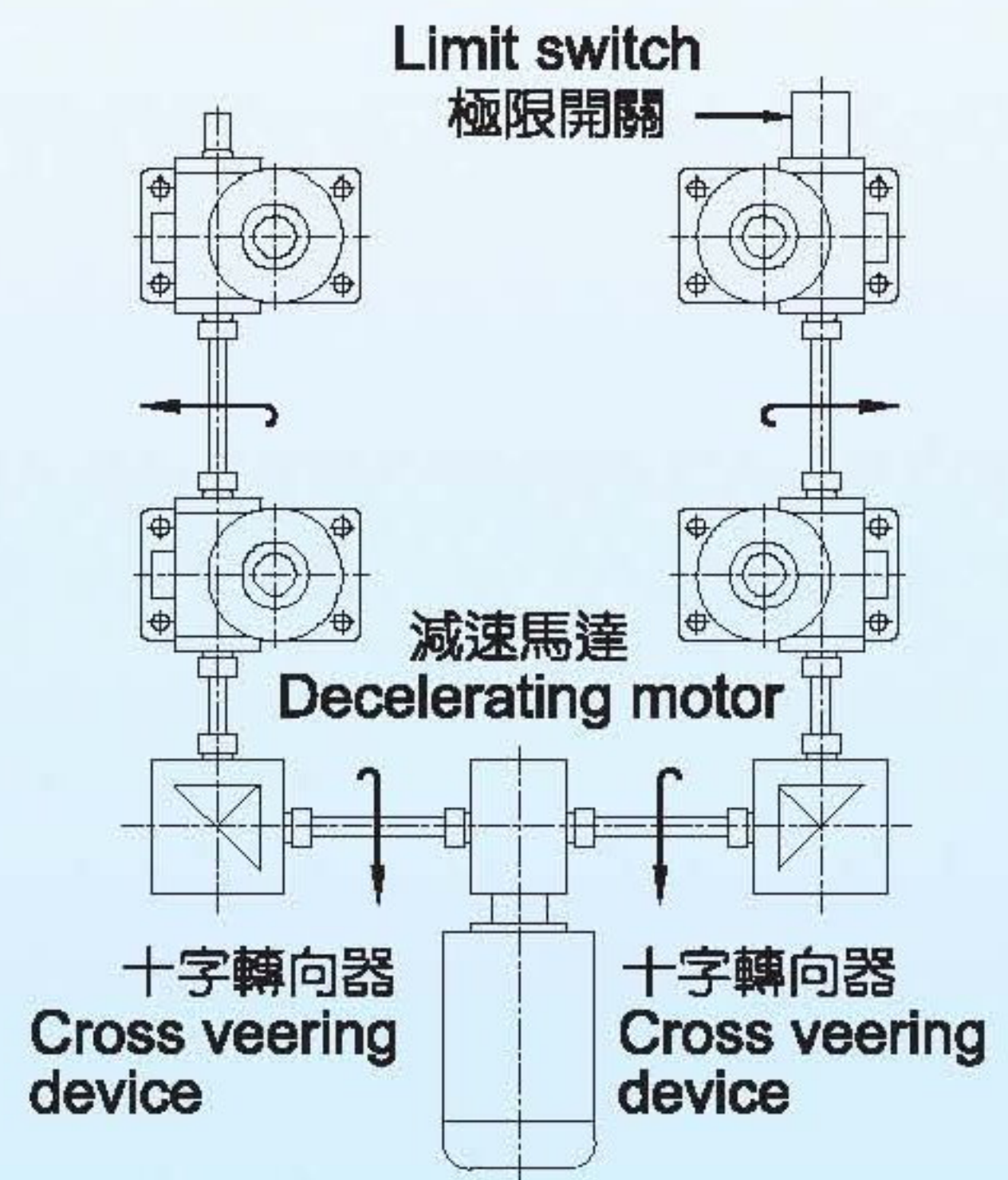
【H】



【T】



【U】



【Modified T】

