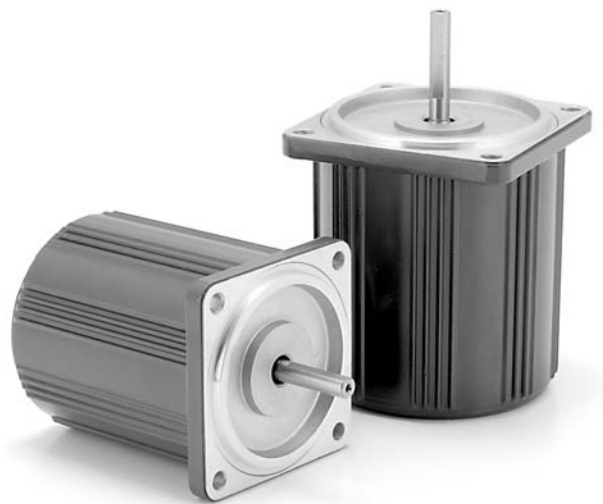
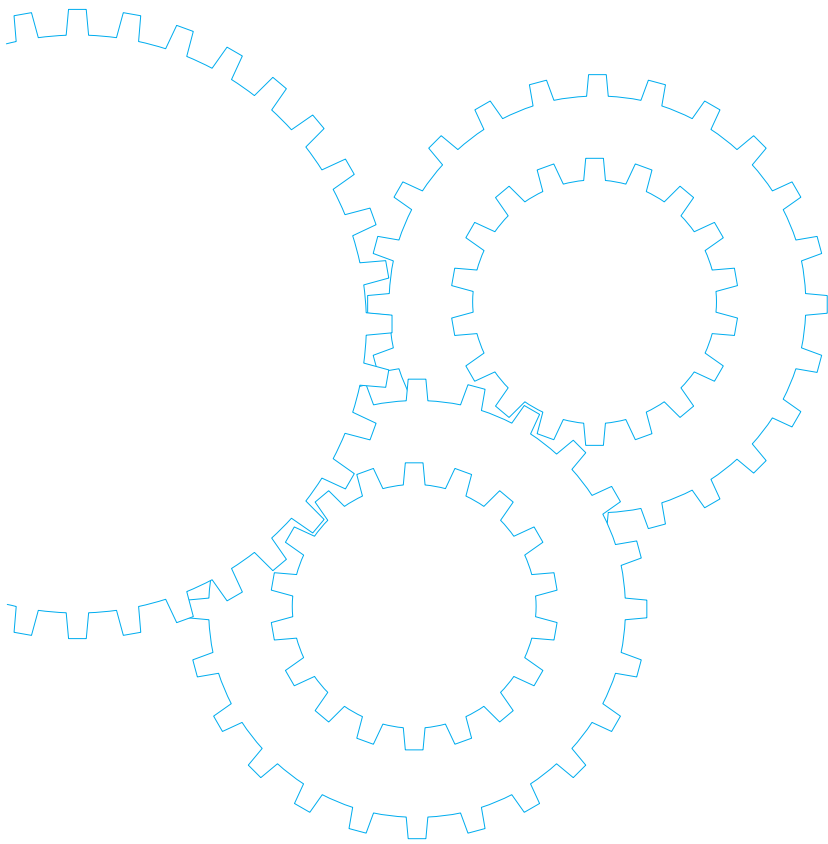


2-pole round shaft motor



Contents

- Motor Overview B-406
- Model list B-407
- Product information for each model B-408

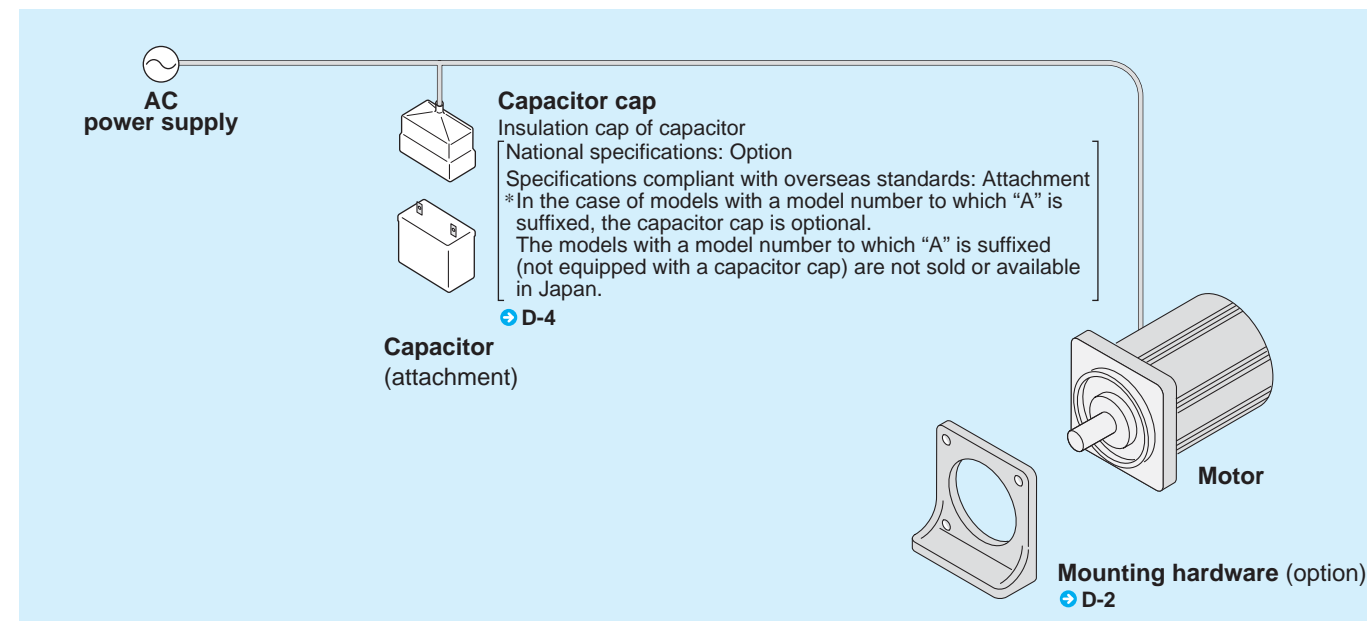
2-pole round shaft motor

Outline of motor

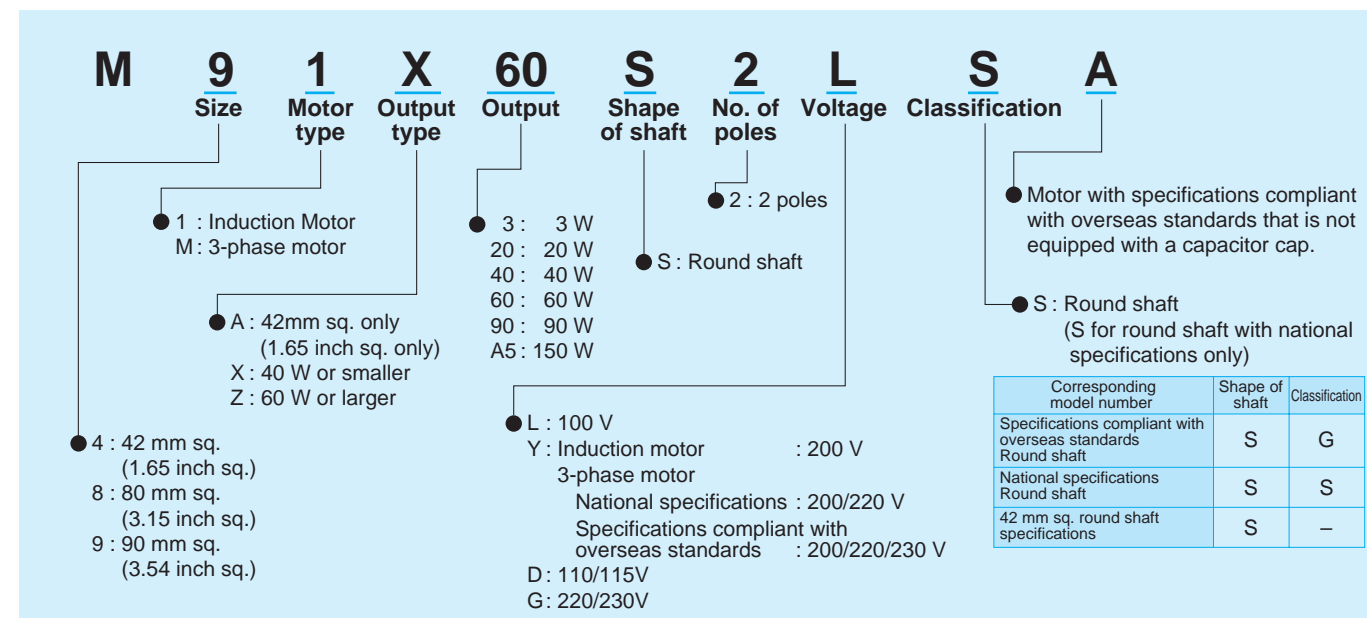
Features

- High-speed induction motor (50Hz: 3000r/min, 60Hz: 3600r/min)
- Continuous time rating

System configuration diagram



Coding system



Fit tolerance

Fit tolerance symbol is used in the outside dimension diagram of motor and gear head. For further information, see "Fit tolerance" on page A-33.

Model list

Size	Output (W)	Single-phase induction motor			3-phase motor		
		Model number	Specifications	Page	Model number	Specifications	Page
42 mm sq. (1.65 inch sq.)	3	M41A3S2L	100V	B-344			
80 mm sq. (3.15 inch sq.)	20	M81X20S2LS	100V	B-345			
		M81X20S2YS	200V	B-345			
	40	M81X40S2LS	100V	B-346	M8MX40S2YS	200/220V	B-356
		M81X40S2YS	200V	B-346	M8MX40S2YG(A)	200/220/230V ★	B-357
		M81X40S2LG(A)	100V	★ B-347			
		M81X40S2DG(A)	110/115V	★ B-347			
		M81X40S2YG(A)	200V	★ B-347			
		M81X40S2GG(A)	220/230V	★ B-347			
	60	M81X60S2LS	100V	B-348	M8MX60S2YS	200/220V	B-358
		M81X60S2YS	200V	B-348	M8MX60S2YG(A)	200/220/230V ★	B-359
M81X60S2LG(A)		100V	★ B-349				
M81X60S2DG(A)		110/115V	★ B-349				
M81X60S2YG(A)		200V	★ B-349				
M81X60S2GG(A)		220/230V	★ B-349				
90 mm sq. (3.54 inch sq.)	60	M91X60S2LS	100V	B-350	M9MX60S2YS	200/220V	B-360
		M91X60S2YS	200V	B-350	M9MX60S2YG(A)	200/220/230V ★	B-361
		M91X60S2LG(A)	100V	★ B-351			
		M91X60S2DG(A)	110/115V	★ B-351			
		M91X60S2YG(A)	200V	★ B-351			
		M91X60S2GG(A)	220/230V	★ B-351			
	90	M91Z90S2LS	100V	B-352	M9MZ90S2YS	200/220V	B-362
		M91Z90S2YS	200V	B-352	M9MZ90S2YG(A)	200/220/230V ★	B-363
		M91Z90S2LG(A)	100V	★ B-353			
		M91Z90S2DG(A)	110/115V	★ B-353			
		M91Z90S2YG(A)	200V	★ B-353			
		M91Z90S2GG(A)	220/230V	★ B-353			
	150	M91ZA5S2LS	100V	B-354	M9MZA5S2YS	200/220V	B-364
		M91ZA5S2YS	200V	B-354	M9MZA5S2YG(A)	200/220/230V ★	B-365
		M91ZA5S2LG(A)	100V	★ B-355			
		M91ZA5S2DG(A)	110/115V	★ B-355			
		M91ZA5S2YG(A)	200V	★ B-355			
		M91ZA5S2GG(A)	220/230V	★ B-355			

* The models with a motor model number to which "A" is suffixed are not equipped with a capacitor cap. The models with a motor model number to which "A" is suffixed are not sold or available in Japan.

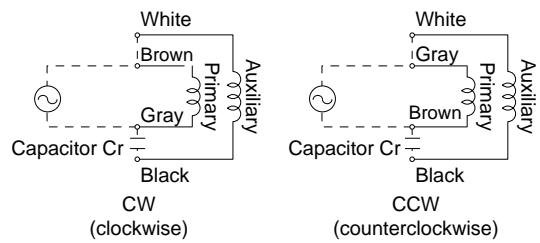
**2-pole round shaft motor
(Induction motor)**

42 mm (1.65 inch) sq. 3 W

• Specifications

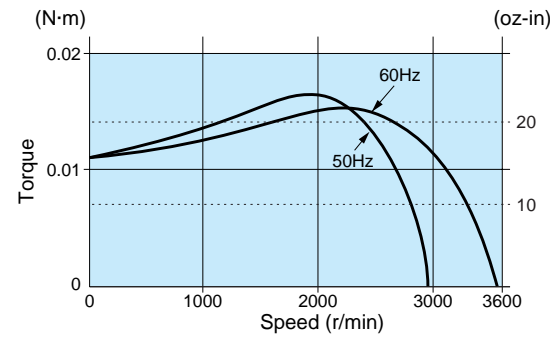
Size	Motor model No.	Number of pole (P)	Output (W)	Voltage (V)	Frequency (Hz)	Rating (min)	Rating				Starting current (A)	Starting torque N-m (oz-in)	Capacitor (μF) (rated voltage)
							Input (W)	Current (A)	Speed (r/min)	Torque N-m (oz-in)			
42 mm sq.	M41A3S2L	2	3	100	50	Cont.	10	0.10	2625	0.011 (1.56)	0.15	0.011 (1.56)	1.5 (200V)
					60		9	0.10	3250	0.009 (1.27)			

Connection diagram



Speed-torque characteristics

M41A3S2L

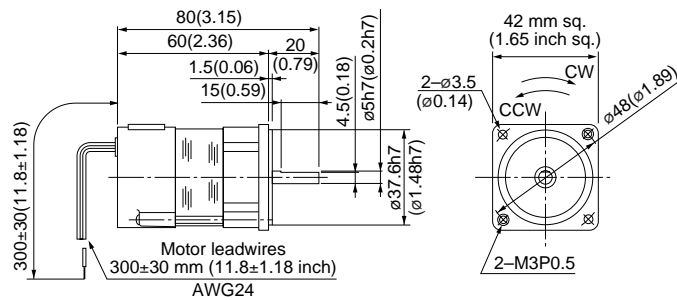


Motor (dimensions)

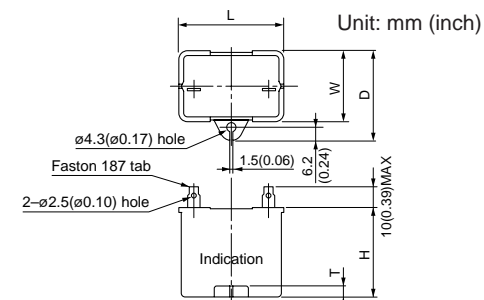
Scale: 1/3, Unit: mm (inch)

M41A3S2L 2P 3 W 100 V

Mass
0.3 kg
0.66 lb



Capacitor (dimensions) [attachment]



• Capacitor dimension list Unit: upper (mm) / lower (inch)

Model number of motor	Model number of capacitor (attachment)	L	W	D	H	T	Capacitor cap (option)
M41A3S2L	M0PC1.5M20	39.5 (1.56)	16 (0.63)	26.5 (1.04)	30.5 (1.20)	4 (0.16)	M0PC3917

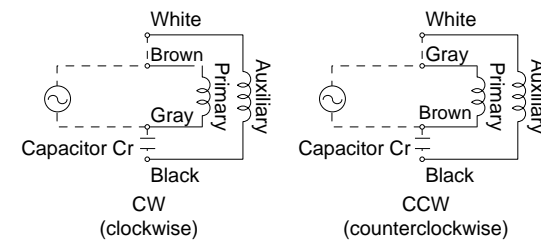
**2-pole round shaft motor
(Induction motor)**

80 mm (3.15 inch) sq. 20 W

• Specifications

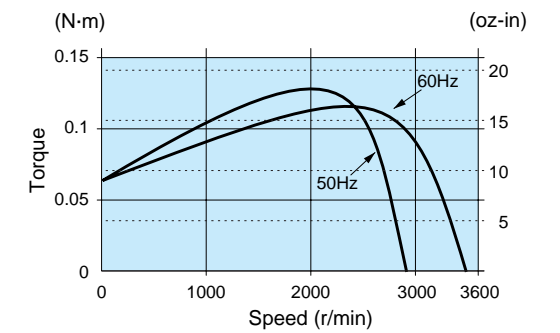
Size	Motor model No.	Number of pole (P)	Output (W)	Voltage (V)	Frequency (Hz)	Rating (min)	Rating				Starting current (A)	Starting torque N-m (oz-in)	Capacitor (μF) (rated voltage)
							Input (W)	Current (A)	Speed (r/min)	Torque N-m (oz-in)			
80 mm sq.	M81X20S2LS	2	20	100	50	Cont.	40	0.40	2575	0.074 (10.5)	0.83	0.064 (9.06)	6 (200V)
					60		38	0.38	3175	0.060 (8.50)			
	M81X20S2YS	2	20	200	50	Cont.	40	0.20	2575	0.074 (10.5)	0.42	0.063 (8.92)	1.5 (400V)
					60		39	0.20	3150	0.061 (8.64)			

Connection diagram



Speed-torque characteristics

M81X20S2LS

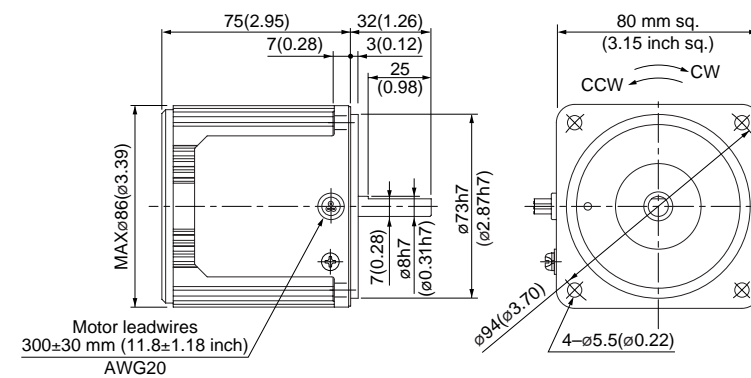


Motor (dimensions)

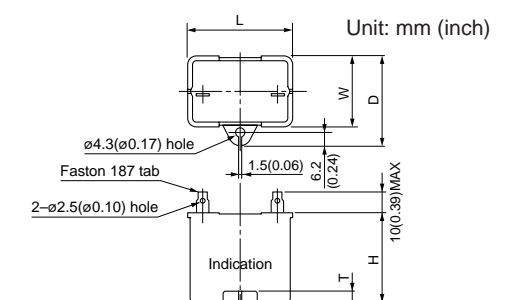
Scale: 1/3, Unit: mm (inch)

M81X20S2LS 2P 20 W 100 V
M81X20S2YS 2P 20 W 200 V

Mass
1.2 kg
2.65 lb



Capacitor (dimensions) [attachment]



• Capacitor dimension list Unit: upper (mm) / lower (inch)

Model number of motor	Model number of capacitor (attachment)	L	W	D	H	T	Capacitor cap (option)
M81X20S2LS	M0PC6M20	39.5 (1.56)	17.5 (0.69)	28 (1.10)	30.5 (1.20)	4 (0.16)	M0PC3917
M81X20S2YS	M0PC1.5M40	39.5 (1.56)	22 (0.87)	32.5 (1.28)	32.5 (1.28)	4 (0.16)	M0PC3922

* The models with a motor model number to which "A" is suffixed are not equipped with a capacitor cap.

(Note) Because the dimensions may be subject to change, also check the determinate dimensions if the gear head is to be used for design.

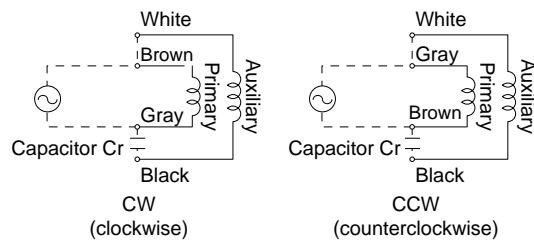
2-pole round shaft motor (Induction motor)

80 mm (3.15 inch) sq. 40 W

Specifications

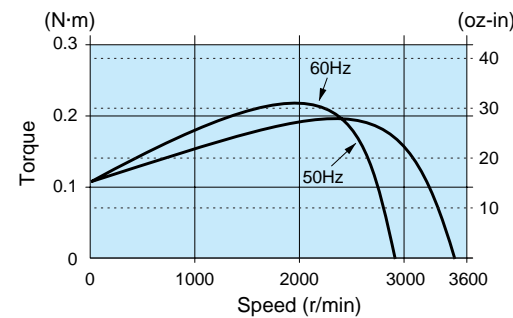
Size	Motor model No.	Number of pole (P)	Output (W)	Voltage (V)	Frequency (Hz)	Rating (min)	Rating				Starting current (A)	Starting torque N-m (oz-in)	Capacitor (μF) (rated voltage)
							Input (W)	Current (A)	Speed (r/min)	Torque N-m (oz-in)			
80 mm sq.	M81X40S2LS	2	40	100	50	Cont.	70	0.70	2550	0.14 (19.8)	1.5	0.10 (14.2)	10 (200V)
					60		68	0.70	3125	0.12 (17.0)	1.4	0.10 (14.2)	
	M81X40S2YS	2	40	200	50	Cont.	66	0.33	2525	0.14 (19.8)	0.67	0.11 (15.6)	2.5 (400V)
					60		69	0.36	3075	0.12 (17.0)	0.66	0.11 (15.6)	

Connection diagram



Speed-torque characteristics

M81X40S2LS

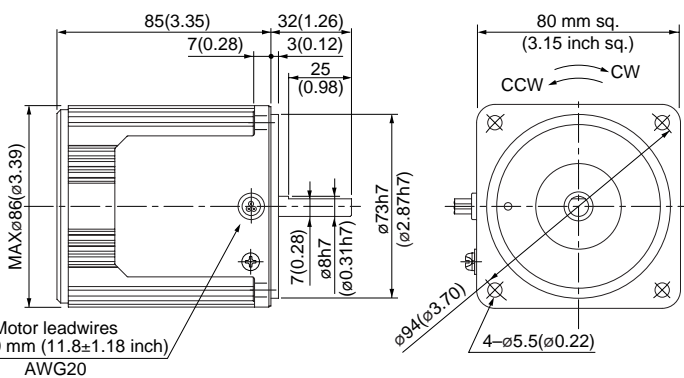


Motor (dimensions)

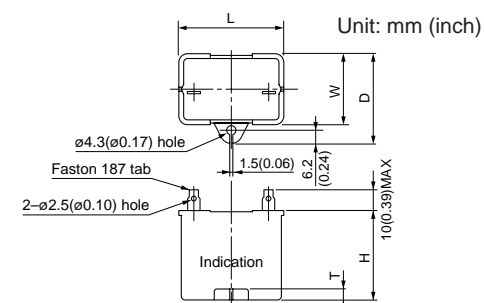
Scale: 1/3, Unit: mm (inch)

M81X40S2LS	2P	40 W	100 V
M81X40S2YS	2P	40 W	200 V

Mass
1.5 kg
3.31 lb



Capacitor (dimensions) [attachment]



Capacitor dimension list Unit: upper (mm) / lower (inch)

Model number of motor	Model number of capacitor (attachment)	L	W	D	H	T	Capacitor cap (option)
M81X40S2LS	M0PC10M20	39.5 (1.56)	26.7 (1.05)	37 (1.46)	32 (1.26)	4 (0.16)	M0PC3926
M81X40S2YS	M0PC2.5M40	49.7 (1.96)	24 (0.94)	34.5 (1.36)	34.5 (1.36)	4 (0.16)	M0PC5026

* Please read your User's manual carefully so that you will understand the operation and safety precautions before attempting to operate the system.

2-pole round shaft motor (Induction motor)

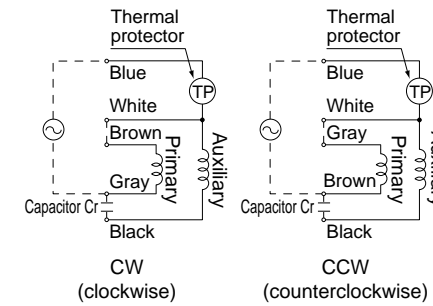
80 mm (3.15 inch) sq. 40 W

Specifications

Size	Motor model No.	Number of pole (P)	Output (W)	Voltage (V)	Frequency (Hz)	Rating (min)	Rating				Starting current (A)	Starting torque N-m (oz-in)	Capacitor (μF) (rated voltage)
							Input (W)	Current (A)	Speed (r/min)	Torque N-m (oz-in)			
80 mm sq.	M81X40S2LG M81X40S2LGA	2	40	100	50	Cont.	72	0.71	2575	0.15 (21.2)	1.6	0.10 (14.2)	10 (250V)
					60		70	0.70	3150	0.12 (17.0)	1.5	0.10 (14.2)	
	M81X40S2DG M81X40S2DGA	2	40	110	60	Cont.	69	0.62	3225	0.12 (17.0)	1.6	0.10 (14.2)	8 (250V)
					60		71	0.62	3275	0.12 (17.0)	1.7	0.10 (14.2)	
	M81X40S2YG M81X40S2YGA	2	40	200	50	Cont.	71	0.36	2425	0.16 (22.7)	0.65	0.10 (14.2)	2.5 (450V)
					60		73	0.38	3025	0.13 (18.4)	0.64	0.10 (14.2)	
	M81X40S2GG M81X40S2GGA	2	40	220	50	Cont.	72	0.34	2525	0.15 (21.2)	0.69	0.10 (14.2)	1.7 (450V)
					60		66	0.30	3125	0.12 (17.0)	0.67	0.10 (14.2)	
					50		73	0.33	2600	0.15 (21.2)	0.71	0.10 (14.2)	
					60		65	0.29	3200	0.12 (17.0)	0.69	0.10 (14.2)	

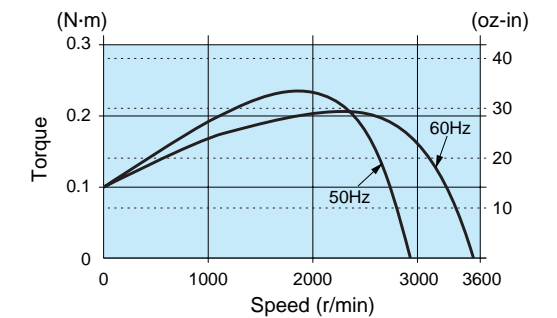
* The models with a motor model number to which "A" is suffixed are not equipped with a capacitor cap. The models with a motor model number to which "A" is suffixed are not sold or available in Japan.

Connection diagram



Speed-torque characteristics

M81X40S2LG(A)

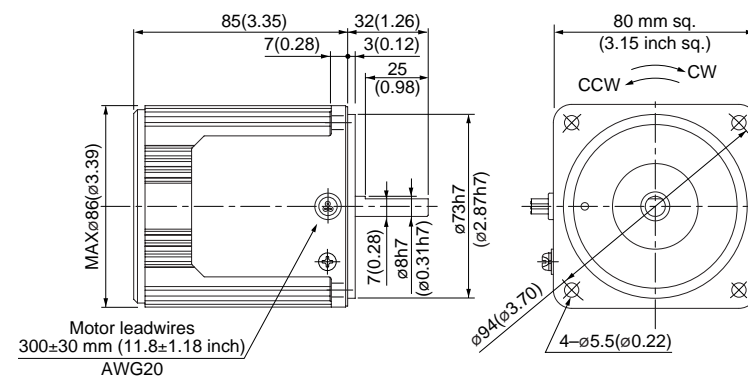


Motor (dimensions)

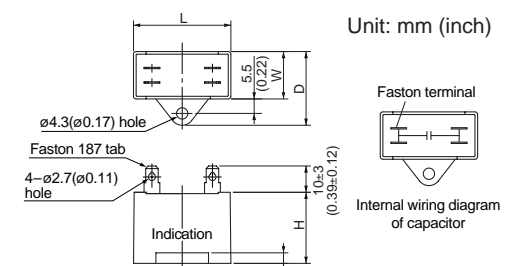
Scale: 1/3, Unit: mm (inch)

M81X40S2LG(A)	2P	40 W	100 V
M81X40S2DG(A)	2P	40 W	110 V / 115 V
M81X40S2YG(A)	2P	40 W	200 V
M81X40S2GG(A)	2P	40 W	220 V / 230 V

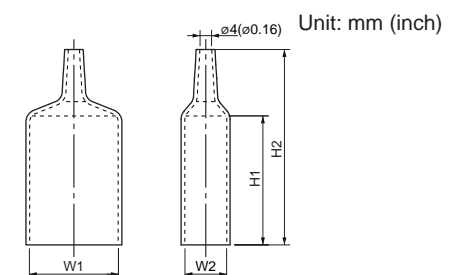
Mass
1.5 kg
3.31 lb



Capacitor (dimensions) [attachment]



Capacitor cap (dimensions)



Capacitor dimension list Unit: upper (mm) / lower (inch)

Model number of motor	Model number of capacitor (attachment)	L	W	D	H	T	Capacitor cap	W1	W2	H1	H2
M81X40S2LG(A)	M0PC10M25G	58 (2.28)	21 (0.83)	31 (1.22)	31 (1.22)	4 (0.16)	M0PC5821G	58 (2.28)	21 (0.83)	55 (2.17)	78 (3.07)
M81X40S2DG(A)	M0PC8M25G	48 (1.89)	21 (0.83)	31 (1.22)	31 (1.22)	4 (0.16)	M0PC4821G	48 (1.89)	21 (0.83)	55 (2.17)	78 (3.07)
M81X40S2YG(A)	M0PC2.5M45G	48 (1.89)	21 (0.83)	31 (1.22)	31 (1.22)	4 (0.16)	M0PC4821G	48 (1.89)	21 (0.83)	55 (2.17)	78 (3.07)
M81X40S2GG(A)	M0PC1.7M45G	38 (1.50)	21 (0.83)	31 (1.22)	31 (1.22)	4 (0.16)	M0PC3821G	38 (1.50)	21 (0.83)	55 (2.17)	78 (3.07)

* The models with a motor model number to which "A" is suffixed are not equipped with a capacitor cap.

(Note) Because the dimensions may be subject to change, also check the determinate dimensions if the gear head is to be used for design.

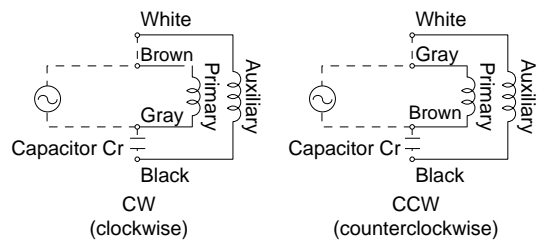
2-pole round shaft motor
(Induction motor)

80 mm (3.15 inch) sq. 60 W

• Specifications

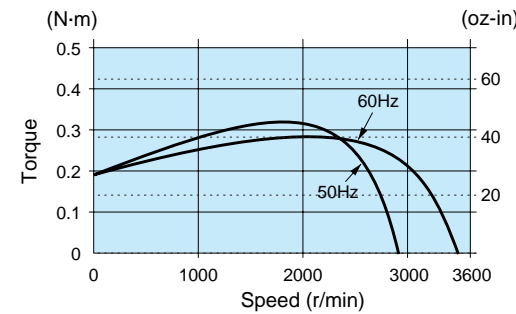
Size	Motor model No.	Number of pole (P)	Output (W)	Voltage (V)	Frequency (Hz)	Rating (min)	Rating				Starting current (A)	Starting torque N-m (oz-in)	Capacitor (μF) (rated voltage)
							Input (W)	Current (A)	Speed (r/min)	Torque N-m (oz-in)			
80 mm sq.	M81X60S2LS	2	60	100	50	Cont.	111	1.1	2500	0.23 (32.6)	1.9	0.19 (26.9)	12 (200V)
					60		114	1.2	3050	0.19 (26.9)	1.9	0.19 (26.9)	
	M81X60S2YS	2	60	200	50	Cont.	112	0.56	2475	0.23 (32.6)	0.97	0.18 (25.5)	3.0 (400V)
					60		117	0.59	3025	0.20 (28.3)	0.96	0.18 (25.5)	

Connection diagram



Speed-torque characteristics

M81X60S2LS

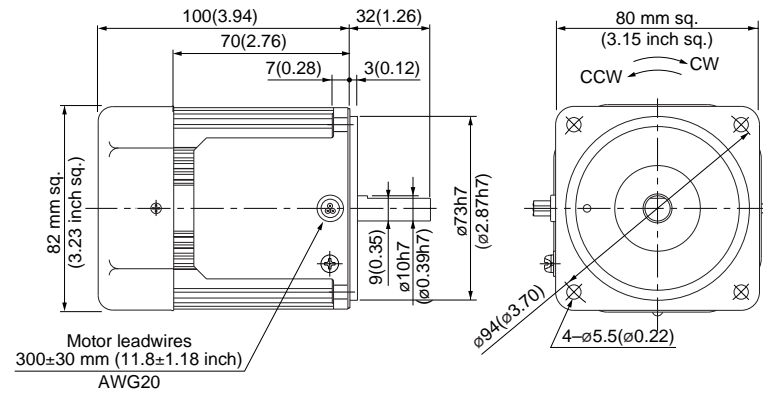


Motor (dimensions)

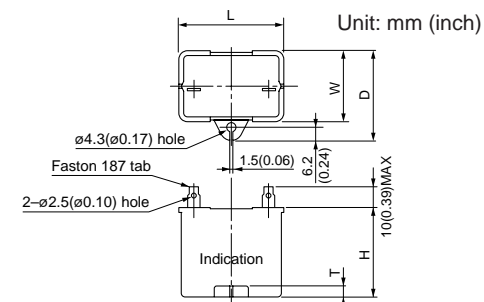
Scale: 1/3, Unit: mm (inch)

M81X60S2LS	2P	60 W	100 V (with fan)
M81X60S2YS	2P	60 W	200 V (with fan)

Mass
1.8 kg
3.97 lb



Capacitor (dimensions) [attachment]



• Capacitor dimension list Unit: upper (mm) / lower (inch)

Model number of motor	Model number of capacitor (attachment)	L	W	D	H	T	Capacitor cap (option)
M81X60S2LS	M0PC12M20	39.5 (1.56)	26.7 (1.05)	37 (1.46)	32 (1.26)	4 (0.16)	M0PC3926
M81X60S2YS	M0PC3M40	49.7 (1.96)	24 (0.94)	34.5 (1.36)	34.5 (1.36)	4 (0.16)	M0PC5026

* Please read your User's manual carefully so that you will understand the operation and safety precautions before attempting to operate the system.

2-pole round shaft motor
(Induction motor)

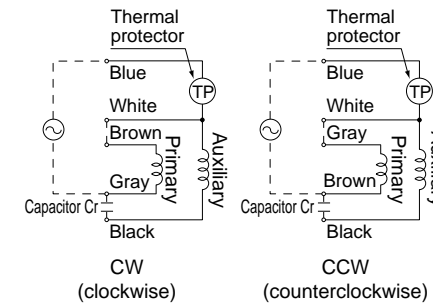
80 mm (3.15 inch) sq. 60 W

• Specifications

Size	Motor model No.	Number of pole (P)	Output (W)	Voltage (V)	Frequency (Hz)	Rating (min)	Rating				Starting current (A)	Starting torque N-m (oz-in)	Capacitor (μF) (rated voltage)
							Input (W)	Current (A)	Speed (r/min)	Torque N-m (oz-in)			
80 mm sq.	M81X60S2LG M81X60S2LGA	2	60	100	50	Cont.	113	1.1	2450	0.23 (32.6)	1.9	0.18 (25.5)	18 (250V)
					60		118	1.2	3050	0.19 (26.9)	1.9	0.18 (25.5)	
	M81X60S2DG M81X60S2DGA	2	60	110	60	Cont.	105	0.95	3100	0.18 (25.5)	1.9	0.18 (25.5)	12 (250V)
					60		108	0.94	3175	0.18 (25.5)	2.0	0.18 (25.5)	
	M81X60S2YG M81X60S2YGA	2	60	200	50	Cont.	126	0.64	2250	0.25 (35.4)	0.82	0.18 (25.5)	5 (450V)
					60		143	0.74	2725	0.21 (29.7)	0.87	0.18 (25.5)	
	M81X60S2GG M81X60S2GGA	2	60	220	50	Cont.	114	0.52	2475	0.23 (32.6)	0.84	0.18 (25.5)	4 (450V)
					60		122	0.58	3050	0.19 (26.9)	0.86	0.18 (25.5)	
					50		119	0.52	2550	0.22 (31.2)	0.87	0.18 (25.5)	
					60		125	0.57	3125	0.18 (25.5)	0.90	0.18 (25.5)	

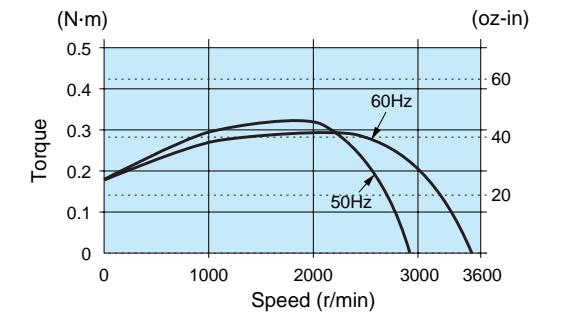
• The models with a motor model number to which "A" is suffixed are not equipped with a capacitor cap. The models with a motor model number to which "A" is suffixed are not sold or available in Japan.

Connection diagram



Speed-torque characteristics

M81X60S2LG(A)

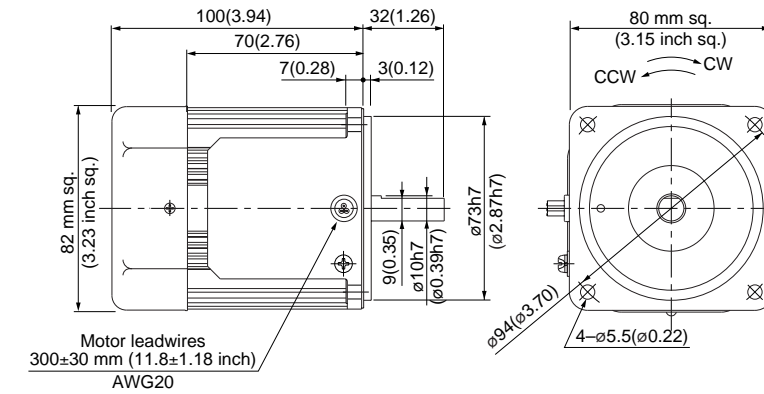


Motor (dimensions)

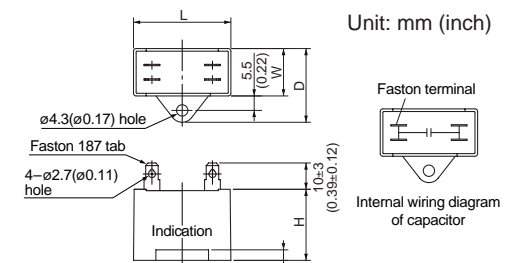
Scale: 1/3, Unit: mm (inch)

M81X60S2LG(A)	2P	60 W	100 V (with fan)
M81X60S2DG(A)	2P	60 W	110 V / 115 V (with fan)
M81X60S2YG(A)	2P	60 W	200 V (with fan)
M81X60S2GG(A)	2P	60 W	220 V / 230 V (with fan)

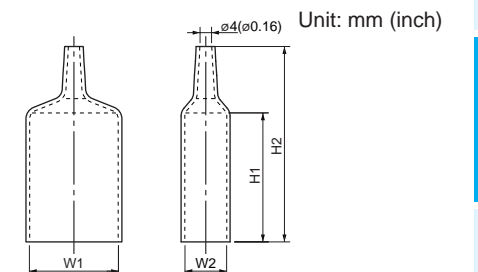
Mass
1.8 kg
3.97 lb



Capacitor (dimensions) [attachment]



Capacitor cap (dimensions)



• Capacitor dimension list Unit: upper (mm) / lower (inch)

Model number of motor	Model number of capacitor (attachment)	L	W	D	H	T	Capacitor cap	W1	W2	H1	H2
M81X60S2LG(A)	M0PC18M25G	58 (2.28)	29 (1.14)	44 (1.73)	41 (1.61)	4 (0.16)	M0PC5829G	58 (2.28)	29 (1.14)	55 (2.17)	78 (3.07)
M81X60S2DG(A)	M0PC12M25G	58 (2.28)	22 (0.87)	32 (1.26)	35 (1.38)	4 (0.16)	M0PC5822G	58 (2.28)	22 (0.87)	55 (2.17)	78 (3.07)
M81X60S2YG(A)	M0PC5M45G	58 (2.28)	29 (1.14)	44 (1.73)	41 (1.61)	4 (0.16)	M0PC5829G	58 (2.28)	29 (1.14)	55 (2.17)	78 (3.07)
M81X60S2GG(A)	M0PC4M45G	58 (2.28)	23.5 (0.93)	38.5 (1.52)	37 (1.46)	4 (0.16)	M0PC5823G	58 (2.28)	23.5 (0.93)	55 (2.17)	78 (3.07)

• The models with a motor model number to which "A" is suffixed are not equipped with a capacitor cap.

(Note) Because the dimensions may be subject to change, also check the determinate dimensions if the gear head is to be used for design.

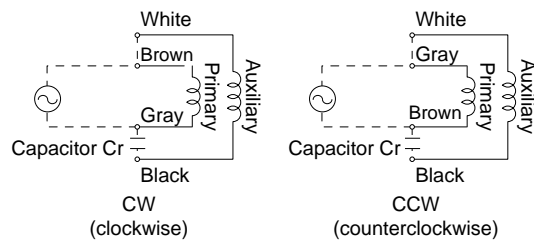
2-pole round shaft motor (Induction motor)

90 mm (3.54 inch) sq. 60 W

• Specifications

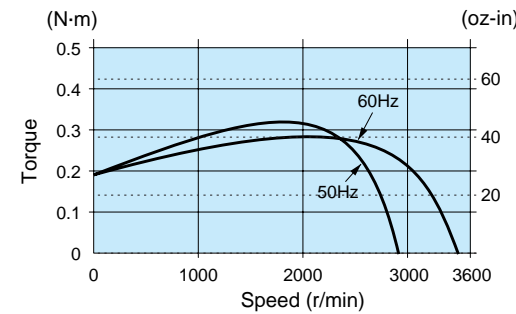
Size	Motor model No.	Number of pole (P)	Output (W)	Voltage (V)	Frequency (Hz)	Rating (min)	Rating				Starting current (A)	Starting torque N-m (oz-in)	Capacitor (μF) (rated voltage)
							Input (W)	Current (A)	Speed (r/min)	Torque N-m (oz-in)			
90 mm sq.	M91X60S2LS	2	60	100	50	Cont.	92	0.95	2725	0.20 (28.3)	2.9	0.17 (24.1)	14 (200V)
					60		89	0.90	3325	0.16 (22.7)	2.8	0.17 (24.1)	
	M91X60S2YS	2	60	200	50	Cont.	94	0.48	2725	0.20 (28.3)	1.4	0.17 (24.1)	3.5 (400V)
					60		90	0.46	3300	0.16 (22.7)	1.4	0.17 (24.1)	

Connection diagram



Speed-torque characteristics

M91X60S2LS

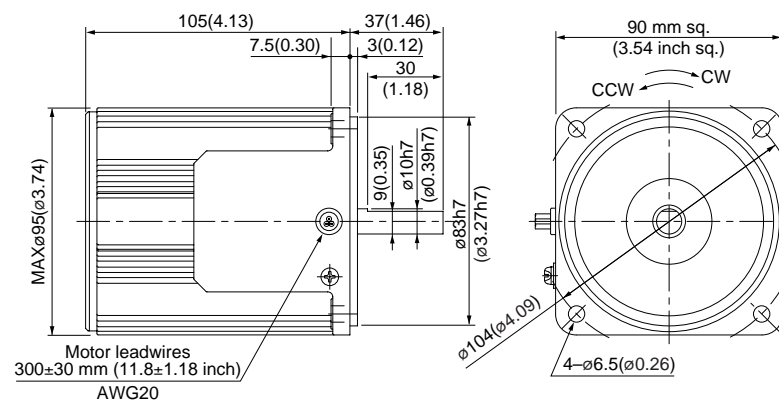


Motor (dimensions)

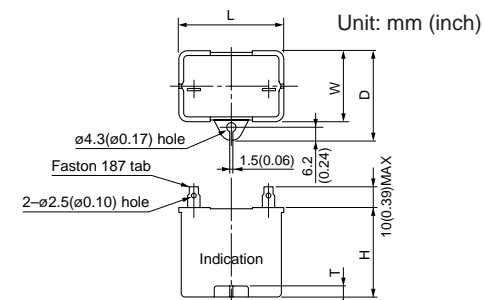
Scale: 1/3, Unit: mm (inch)

M91X60S2LS	2P	60 W	100 V
M91X60S2YS	2P	60 W	200 V

Mass
2.4 kg
5.29 lb



Capacitor (dimensions) [attachment]



• Capacitor dimension list Unit: upper (mm) / lower (inch)

Model number of motor	Model number of capacitor (attachment)	L	W	D	H	T	Capacitor cap (option)
M91X60S2LS	M0PC14M20	39.5 (1.56)	26.7 (1.05)	37 (1.46)	41 (1.61)	4 (0.16)	M0PC3926
M91X60S2YS	M0PC3.5M40	49.7 (1.96)	24 (0.94)	34.5 (1.36)	34.5 (1.36)	4 (0.16)	M0PC5026

* Please read your User's manual carefully so that you will understand the operation and safety precautions before attempting to operate the system.

2-pole round shaft motor (Induction motor)

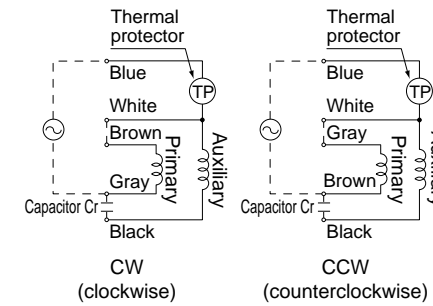
90 mm (3.54 inch) sq. 60 W

• Specifications

Size	Motor model No.	Number of pole (P)	Output (W)	Voltage (V)	Frequency (Hz)	Rating (min)	Rating				Starting current (A)	Starting torque N-m (oz-in)	Capacitor (μF) (rated voltage)
							Input (W)	Current (A)	Speed (r/min)	Torque N-m (oz-in)			
90 mm sq.	M91X60S2LG M91X60S2LGA	2	60	100	50	Cont.	93	0.98	2725	0.21 (29.7)	3.1	0.16 (22.7)	14 (250V)
					60		89	0.90	3325	0.17 (24.1)	2.9	0.16 (22.7)	
	M91X60S2DG M91X60S2DGA	2	60	110	60	Cont.	91	0.83	3375	0.17 (24.1)	3.2	0.16 (22.7)	12 (250V)
					60		94	0.82	3375	0.17 (24.1)	3.3	0.16 (22.7)	
	M91X60S2YG M91X60S2YGA	2	60	200	50	Cont.	92	0.46	2700	0.21 (29.7)	1.3	0.16 (22.7)	4 (450V)
					60		98	0.53	3275	0.17 (24.1)	1.3	0.16 (22.7)	
	M91X60S2GG M91X60S2GGA	2	60	220	50	Cont.	93	0.45	2725	0.21 (29.7)	1.4	0.16 (22.7)	3 (450V)
					60		91	0.42	3325	0.17 (24.1)	1.4	0.16 (22.7)	
					50		97	0.46	2750	0.21 (29.7)	1.5	0.16 (22.7)	
					60		92	0.41	3350	0.17 (24.1)	1.4	0.16 (22.7)	

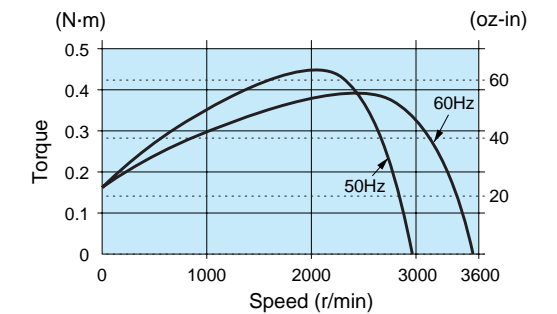
• The models with a motor model number to which "A" is suffixed are not equipped with a capacitor cap.
The models with a motor model number to which "A" is suffixed are not sold or available in Japan.

Connection diagram



Speed-torque characteristics

M91X60S2LG(A)

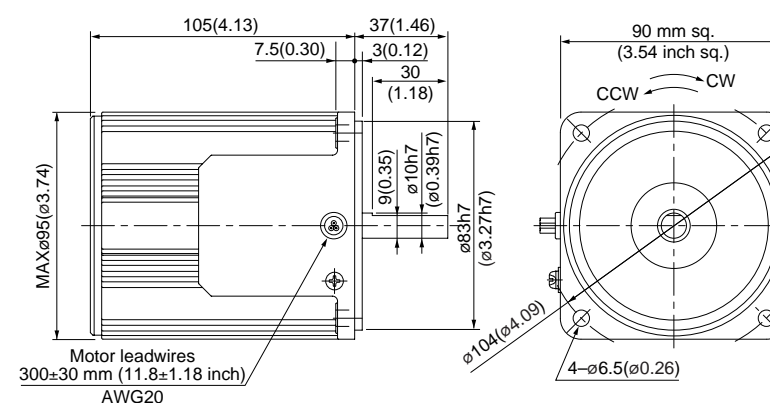


Motor (dimensions)

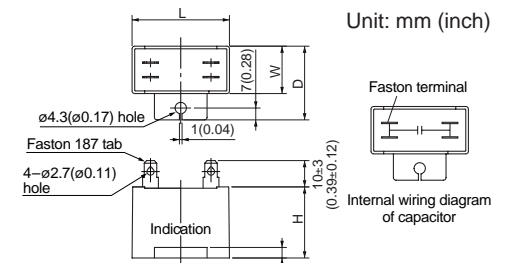
Scale: 1/3, Unit: mm (inch)

M91X60S2LG(A)	2P	60 W	100 V
M91X60S2DG(A)	2P	60 W	110 V / 115 V
M91X60S2YG(A)	2P	60 W	200 V
M91X60S2GG(A)	2P	60 W	220 V / 230 V

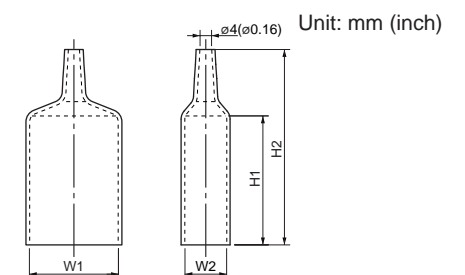
Mass
2.4 kg
5.29 lb



Capacitor (dimensions) [attachment]



Capacitor cap (dimensions)



• Capacitor dimension list Unit: upper (mm) / lower (inch)

Model number of motor	Model number of capacitor (attachment)	L	W	D	H	T	Capacitor cap	W1	W2	H1	H2
M91X60S2LG(A)	M0PC14M25G	58 (2.28)	22 (0.87)	32 (1.26)	35 (1.38)	4 (0.16)	M0PC5822G	58 (2.28)	22 (0.87)	55 (2.17)	78 (3.07)
M91X60S2DG(A)	M0PC12M25G	58 (2.28)	22 (0.87)	32 (1.26)	35 (1.38)	4 (0.16)	M0PC5822G	58 (2.28)	22 (0.87)	55 (2.17)	78 (3.07)
M91X60S2YG(A)	M0PC4M45G	58 (2.28)	23.5 (0.93)	38.5 (1.52)	37 (1.46)	4 (0.16)	M0PC5823G	58 (2.28)	23.5 (0.93)	55 (2.17)	78 (3.07)
M91X60S2GG(A)	M0PC3M45G	58 (2.28)	21 (0.83)	31 (1.22)	31 (1.22)	4 (0.16)	M0PC4821G	48 (1.89)	21 (0.83)	55 (2.17)	78 (3.07)

• The models with a motor model number to which "A" is suffixed are not equipped with a capacitor cap.

(Note) Because the dimensions may be subject to change, also check the determinate dimensions if the gear head is to be used for design.

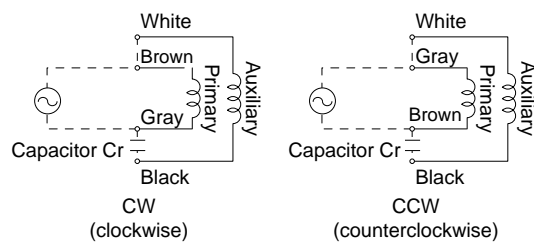
2-pole round shaft motor (Induction motor)

90 mm (3.54 inch) sq. 90 W

Specifications

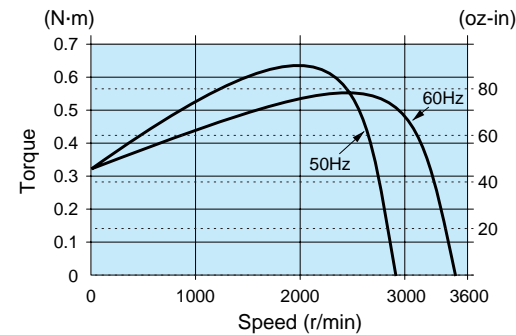
Size	Motor model No.	Number of pole (P)	Output (W)	Voltage (V)	Frequency (Hz)	Rating (min)	Rating				Starting current (A)	Starting torque N-m (oz-in)	Capacitor (μF) (rated voltage)
							Input (W)	Current (A)	Speed (r/min)	Torque N-m (oz-in)			
90 mm sq.	M91Z90S2LS	2	90	100	50	Cont.	151	1.6	2700	0.32 (45.3)	4.1	0.32 (45.3)	25 (200V)
							153	1.6	3275	0.26 (36.8)	3.8	0.32 (45.3)	
	M91Z90S2YS	2	90	200	50	Cont.	153	0.78	2675	0.32 (45.3)	2.0	0.32 (45.3)	6.2 (375V)
							157	0.82	3250	0.26 (36.8)	2.0	0.32 (45.3)	

Connection diagram



Speed-torque characteristics

M91Z90S2LS

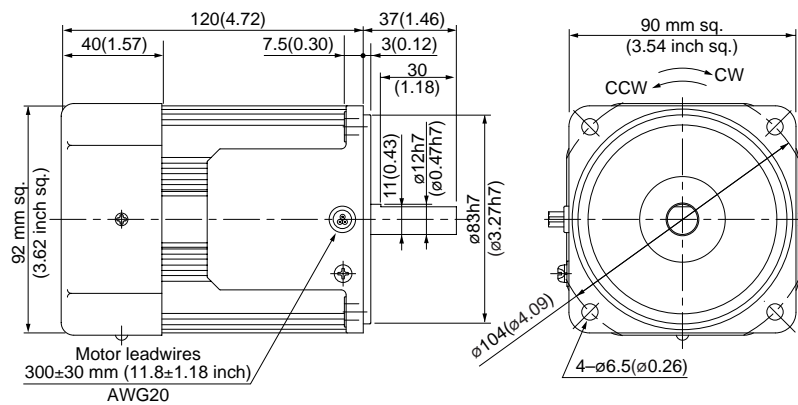


Motor (dimensions)

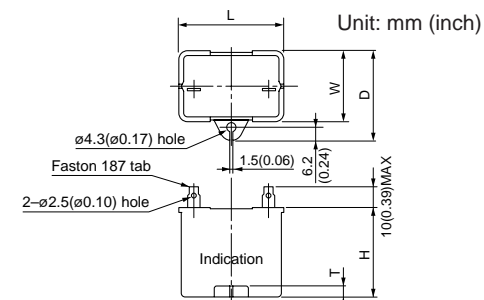
Scale: 1/3, Unit: mm (inch)

M91Z90S2LS	2P	90 W	100 V (with fan)
M91Z90S2YS	2P	90 W	200 V (with fan)

Mass
2.7 kg
5.95 lb



Capacitor (dimensions) [attachment]



Capacitor dimension list Unit: upper (mm) / lower (inch)

Model number of motor	Model number of capacitor (attachment)	L	W	D	H	T	Capacitor cap (option)
M91Z90S2LS	M0PC25M20	50.2 (1.98)	31 (1.22)	41 (1.61)	42 (1.65)	5 (0.20)	M0PC5032
M91Z90S2YS	M0PC6.2M38	50 (1.97)	30.5 (1.20)	41 (1.61)	41.5 (1.63)	4 (0.16)	M0PC5032

* Please read your User's manual carefully so that you will understand the operation and safety precautions before attempting to operate the system.

2-pole round shaft motor (Induction motor)

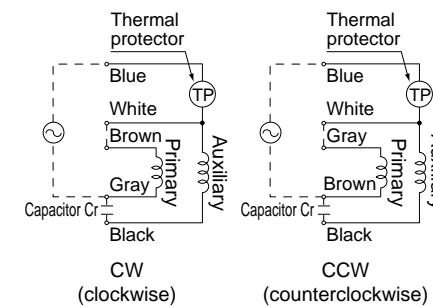
90 mm (3.54 inch) sq. 90 W

Specifications

Size	Motor model No.	Number of pole (P)	Output (W)	Voltage (V)	Frequency (Hz)	Rating (min)	Rating				Starting current (A)	Starting torque N-m (oz-in)	Capacitor (μF) (rated voltage)
							Input (W)	Current (A)	Speed (r/min)	Torque N-m (oz-in)			
90 mm sq.	M91Z90S2LG M91Z90S2LGA	2	90	100	50	Cont.	151	1.5	2675	0.32 (45.3)	3.8	0.33 (46.7)	28 (250V)
							160	1.8	3250	0.26 (36.8)	3.6	0.33 (46.7)	
	M91Z90S2DG M91Z90S2DGA	2	90	110	60	Cont.	158	1.5	3300	0.26 (36.8)	3.9	0.33 (46.7)	25 (250V)
							165	1.5	3325	0.26 (36.8)	4.0	0.33 (46.7)	
	M91Z90S2YG M91Z90S2YGA	2	90	200	50	Cont.	150	0.76	2600	0.33 (46.7)	1.6	0.33 (46.7)	7 (450V)
							176	0.98	3175	0.27 (38.2)	1.6	0.33 (46.7)	
	M91Z90S2GG M91Z90S2GGA	2	90	220	60	Cont.	152	0.69	2650	0.32 (45.3)	1.7	0.33 (46.7)	6 (450V)
							165	0.81	3225	0.27 (38.2)	1.6	0.33 (46.7)	
							162	0.72	2700	0.32 (45.3)	1.7	0.33 (46.7)	
							168	0.79	3275	0.26 (36.8)	1.7	0.33 (46.7)	

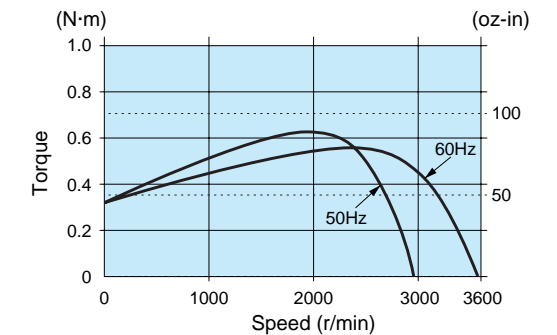
* The models with a motor model number to which "A" is suffixed are not equipped with a capacitor cap.
The models with a motor model number to which "A" is suffixed are not sold or available in Japan.

Connection diagram



Speed-torque characteristics

M91Z90S2LG(A)

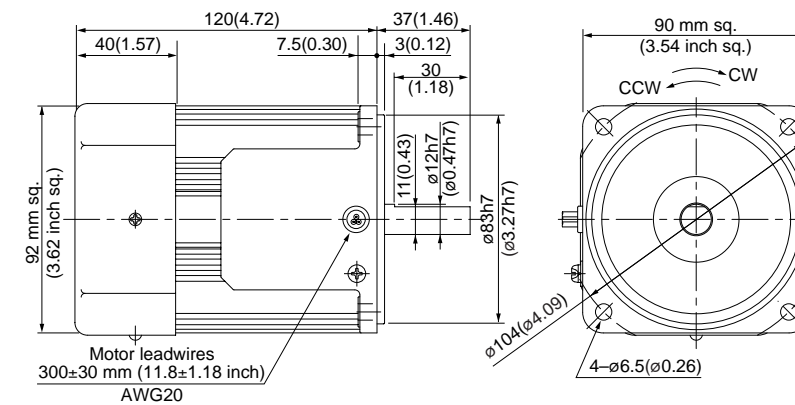


Motor (dimensions)

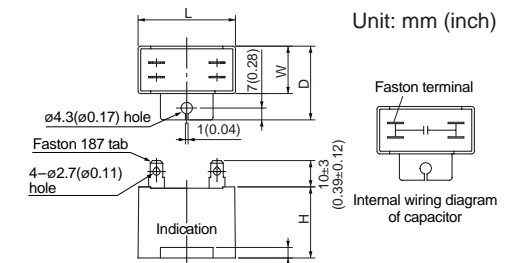
Scale: 1/3, Unit: mm (inch)

M91Z90S2LG(A)	2P	90 W	100 V (with fan)
M91Z90S2DG(A)	2P	90 W	110 V / 115 V (with fan)
M91Z90S2YG(A)	2P	90 W	200 V (with fan)
M91Z90S2GG(A)	2P	90 W	220 V / 230 V (with fan)

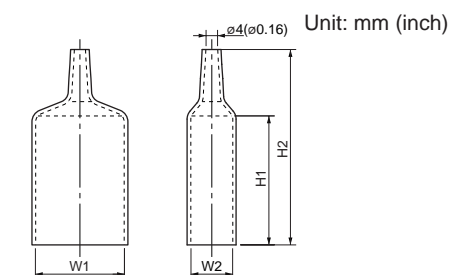
Mass
2.7 kg
5.95 lb



Capacitor (dimensions) [attachment]



Capacitor cap (dimensions)



Capacitor dimension list Unit: upper (mm) / lower (inch)

Model number of motor	Model number of capacitor (attachment)	L	W	D	H	T	Capacitor cap	W1	W2	H1	H2
M91Z90S2LG(A)	M0PC28M25G	58 (2.28)	35 (1.38)	50 (1.97)	50 (1.97)	4 (0.16)	M0PC5835G	58 (2.28)	35 (1.38)	55 (2.17)	78 (3.07)
M91Z90S2DG(A)	M0PC25M25G	58 (2.28)	35 (1.38)	50 (1.97)	50 (1.97)	4 (0.16)	M0PC5835G	58 (2.28)	35 (1.38)	55 (2.17)	78 (3.07)
M91Z90S2YG(A)	M0PC7M45G	58 (2.28)	35 (1.38)	50 (1.97)	50 (1.97)	4 (0.16)	M0PC5835G	58 (2.28)	35 (1.38)	55 (2.17)	78 (3.07)
M91Z90S2GG(A)	M0PC6M45G	58 (2.28)	29 (1.14)	44 (1.73)	41 (1.61)	4 (0.16)	M0PC5829G	58 (2.28)	29 (1.14)	55 (2.17)	78 (3.07)

* The models with a motor model number to which "A" is suffixed are not equipped with a capacitor cap.

(Note) Because the dimensions may be subject to change, also check the determinate dimensions if the gear head is to be used for design.

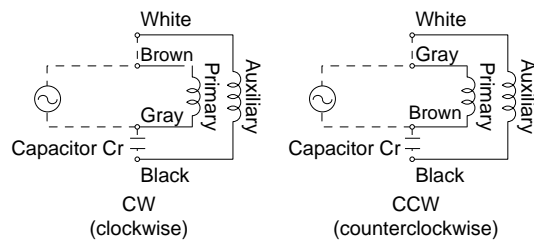
2-pole round shaft motor (Induction motor)

90 mm (3.54 inch) sq. 150 W

Specifications

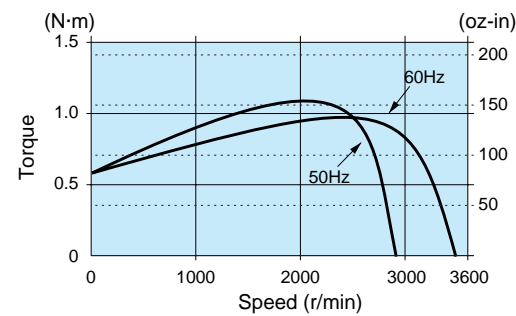
Size	Motor model No.	Number of pole (P)	Output (W)	Voltage (V)	Frequency (Hz)	Rating (min)	Rating				Starting current (A)	Starting torque N-m (oz-in)	Capacitor (μF) (rated voltage)
							Input (W)	Current (A)	Speed (r/min)	Torque N-m (oz-in)			
90 mm sq.	M91ZA5S2LS	2	150	100	50	Cont.	240	2.5	2700	0.53 (75.1)	6.1	0.58 (82.1)	40 (180V)
							251	2.7	3275	0.44 (62.3)	5.9	0.58 (82.1)	
	M91ZA5S2YS	2	150	200	50	Cont.	235	1.2	2725	0.53 (75.1)	3.2	0.53 (75.1)	10 (400V)
							240	1.3	3300	0.43 (60.9)	3.0	0.53 (75.1)	

Connection diagram



Speed-torque characteristics

M91ZA5S2LS

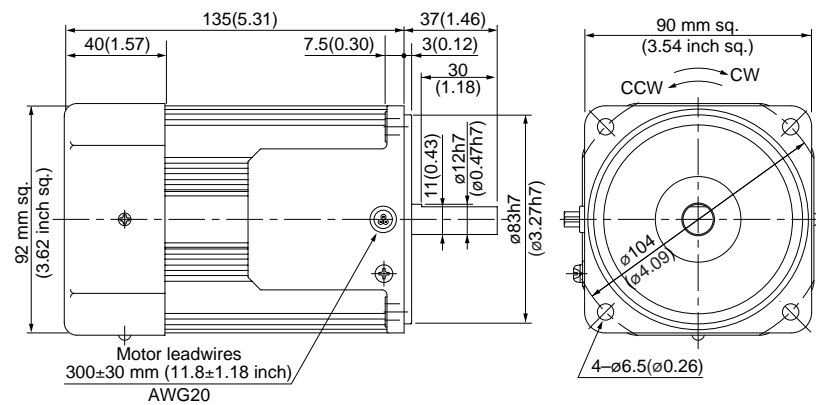


Motor (dimensions)

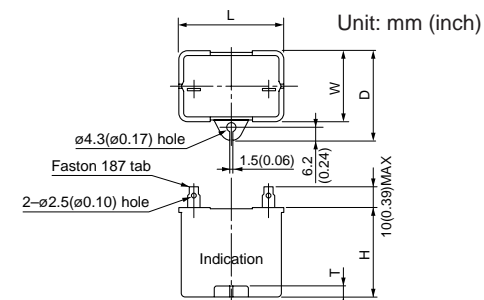
Scale: 1/3, Unit: mm (inch)

M91ZA5S2LS	2P	150 W	100 V (with fan)
M91ZA5S2YS	2P	150 W	200 V (with fan)

Mass
3.2 kg
7.05 lb



Capacitor (dimensions) [attachment]



Capacitor dimension list Unit: upper (mm) / lower (inch)

Model number of motor	Model number of capacitor (attachment)	L	W	D	H	T	Capacitor cap (option)
M91ZA5S2LS	M0PC40M18	50.2 (1.98)	35 (1.38)	45.5 (1.79)	47 (1.85)	5 (0.20)	—
M91ZA5S2YS	M0PC10M40	50 (1.97)	34 (1.34)	45 (1.77)	45 (1.77)	6 (0.24)	—

* Please read your User's manual carefully so that you will understand the operation and safety precautions before attempting to operate the system.

2-pole round shaft motor (Induction motor)

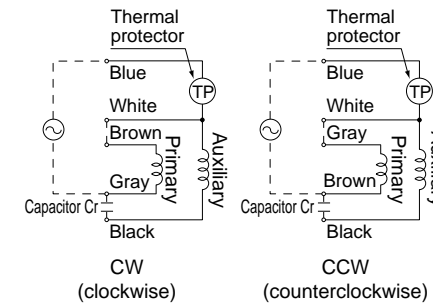
90 mm (3.54 inch) sq. 150 W

Specifications

Size	Motor model No.	Number of pole (P)	Output (W)	Voltage (V)	Frequency (Hz)	Rating (min)	Rating				Starting current (A)	Starting torque N-m (oz-in)	Capacitor (μF) (rated voltage)
							Input (W)	Current (A)	Speed (r/min)	Torque N-m (oz-in)			
90 mm sq.	M91ZA5S2LG M91ZA5S2LGA	2	150	100	50	Cont.	232	2.3	2625	0.55 (77.9)	5.4	0.50 (70.8)	40 (250V)
							250	2.7	3200	0.45 (63.7)	5.2	0.50 (70.8)	
	M91ZA5S2DG M91ZA5S2DGA	2	150	110	60	Cont.	238	2.3	3275	0.44 (62.3)	5.6	0.53 (75.1)	35 (250V)
							253	2.2	3300	0.43 (60.9)	5.8	0.53 (75.1)	
	M91ZA5S2YG M91ZA5S2YGA	2	150	200	50	Cont.	236	1.3	2525	0.57 (80.7)	2.3	0.50 (70.8)	10 (450V)
							271	1.5	3075	0.47 (66.6)	2.2	0.50 (70.8)	
	M91ZA5S2GG M91ZA5S2GGA	2	150	220	60	Cont.	230	1.1	2625	0.55 (77.9)	2.4	0.47 (66.6)	8 (450V)
							243	1.2	3200	0.45 (63.7)	2.3	0.47 (66.6)	
							237	1.1	2650	0.54 (76.5)	2.5	0.53 (75.1)	
							245	1.2	3250	0.44 (62.3)	2.4	0.53 (75.1)	

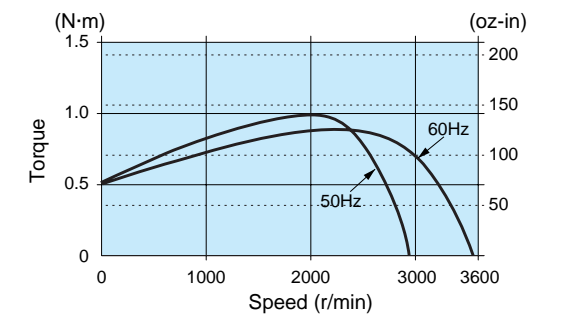
* The models with a motor model number to which "A" is suffixed are not equipped with a capacitor cap.
The models with a motor model number to which "A" is suffixed are not sold or available in Japan.

Connection diagram



Speed-torque characteristics

M91ZA5S2LG(A)

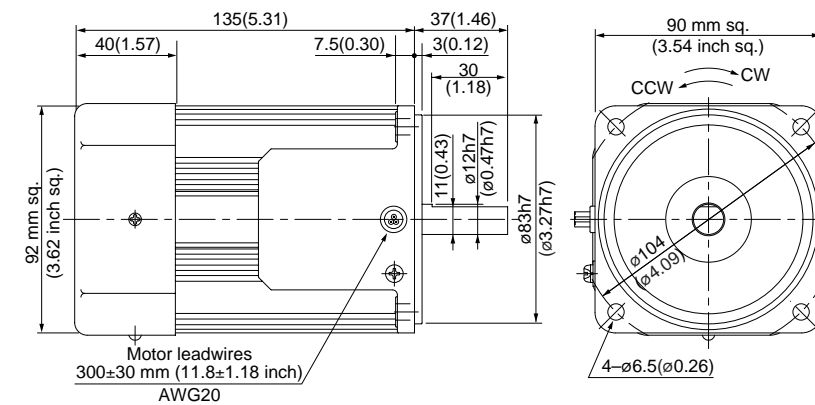


Motor (dimensions)

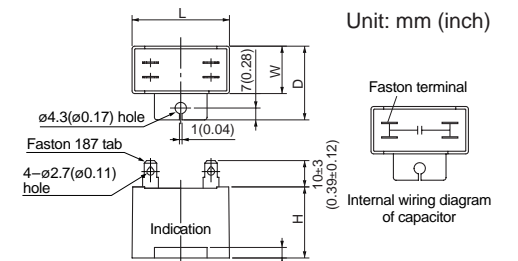
Scale: 1/3, Unit: mm (inch)

M91ZA5S2LG(A)	2P	150 W	100 V (with fan)
M91ZA5S2DG(A)	2P	150 W	110 V / 115 V (with fan)
M91ZA5S2YG(A)	2P	150 W	200 V (with fan)
M91ZA5S2GG(A)	2P	150 W	220 V / 230 V (with fan)

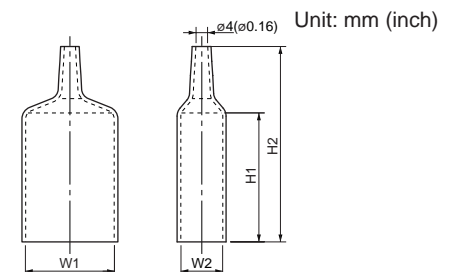
Mass
3.2 kg
7.05 lb



Capacitor (dimensions) [attachment]



Capacitor cap (dimensions)



Capacitor dimension list Unit: upper (mm) / lower (inch)

Model number of motor	Model number of capacitor (attachment)	L	W	D	H	T	Capacitor cap	W1	W2	H1	H2
M91ZA5S2LG(A)	M0PC40M25G	58 (2.28)	41 (1.61)	56 (2.20)	58 (2.28)	4 (0.16)	M0PC5841G	58 (2.28)	41 (1.61)	55 (2.17)	78 (3.07)
M91ZA5S2DG(A)	M0PC35M25G	58 (2.28)	41 (1.61)	56 (2.20)	58 (2.28)	4 (0.16)	M0PC5841G	58 (2.28)	41 (1.61)	55 (2.17)	78 (3.07)
M91ZA5S2YG(A)	M0PC10M45G	58 (2.28)	35 (1.38)	50 (1.97)	50 (1.97)	4 (0.16)	M0PC5835G	58 (2.28)	35 (1.38)	55 (2.17)	78 (3.07)
M91ZA5S2GG(A)	M0PC8M45G	58 (2.28)	35 (1.38)	50 (1.97)	50 (1.97)	4 (0.16)	M0PC5835G	58 (2.28)	35 (1.38)	55 (2.17)	78 (3.07)

* The models with a motor model number to which "A" is suffixed are not equipped with a capacitor cap.

(Note) Because the dimensions may be subject to change, also check the determinate dimensions if the gear head is to be used for design.

Induction motor
Reversible motor
3-phase motor
Electromagnetic brake motor
Variable speed induction motor
Variable speed reversible motor
Variable speed electric-brake motor
Variable speed unit motor
C&B motor
2-pole round shaft motor
Gear head
Gear head - inch (U.S.A.)

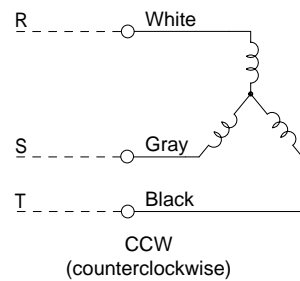
2-pole round shaft motor
(3-phase motor)

80 mm (3.15 inch) sq. 40 W

• Specifications

Size	Motor model No.	Number of pole (P)	Output (W)	Voltage (V)	Frequency (Hz)	Rating (min)	Rating				Starting current (A)	Starting torque N-m (oz-in)
							Input (W)	Current (A)	Speed (r/min)	Torque N-m (oz-in)		
80 mm sq.	M8MX40S2YS	2	40	200	50	Cont.	68	0.24	2525	0.14 (19.8)	0.66	0.30 (42.5)
					60		67	0.22	3050	0.12 (17.0)	0.64	0.24 (34.0)
				220	50	69	0.24	2650	0.13 (18.4)	0.72	0.37 (52.4)	
					60	65	0.22	3175	0.12 (17.0)	0.70	0.29 (41.1)	

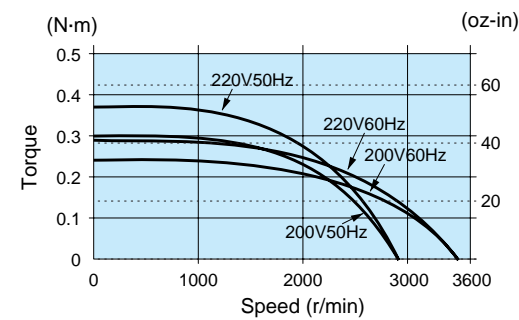
Connection diagram



Change any two lead wires of R, S and T for CW rotation.

Speed-torque characteristics

M8MX40S2YS

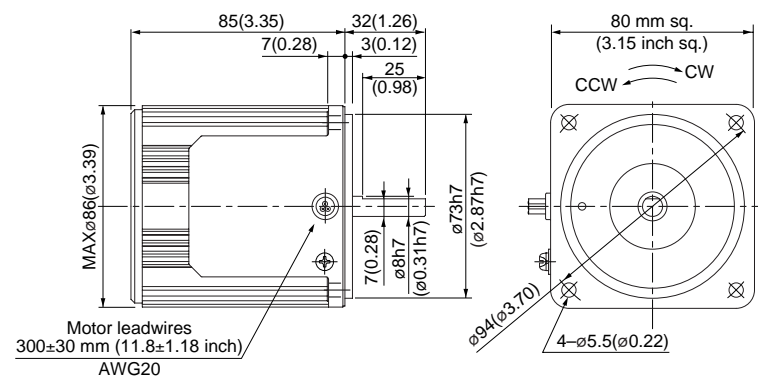


Motor (dimensions)

Scale: 1/3, Unit: mm (inch)

M8MX40S2YS 2P 40 W 200 V / 220 V

Mass
1.5 kg
3.31 lb



2-pole round shaft motor
(3-phase motor)

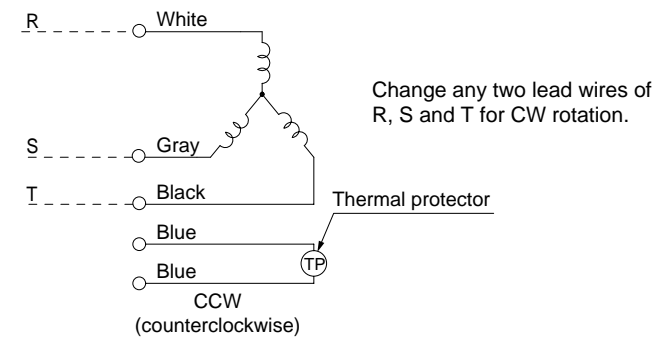
80 mm (3.15 inch) sq. 40 W

• Specifications

Size	Motor model No.	Number of pole (P)	Output (W)	Voltage (V)	Frequency (Hz)	Rating (min)	Rating				Starting current (A)	Starting torque N-m (oz-in)
							Input (W)	Current (A)	Speed (r/min)	Torque N-m (oz-in)		
80 mm sq.	M8MX40S2YG M8MX40S2YGA	2	40	200	50	Cont.	72	0.24	2525	0.14 (19.8)	0.66	0.30 (42.5)
					60		67	0.22	3050	0.12 (17.0)	0.64	0.24 (34.0)
				220	60	68	0.22	3175	0.12 (17.0)	0.70	0.29 (41.1)	
					60	68	0.22	3200	0.12 (17.0)	0.70	0.31 (43.9)	

• The models with a motor model number to which "A" is suffixed are not sold or available in Japan.

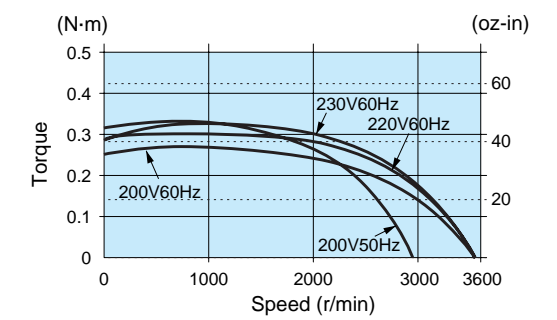
Connection diagram



(Refer to page A-58 for connection of thermal protector.)

Speed-torque characteristics

M8MX40S2YG(A)

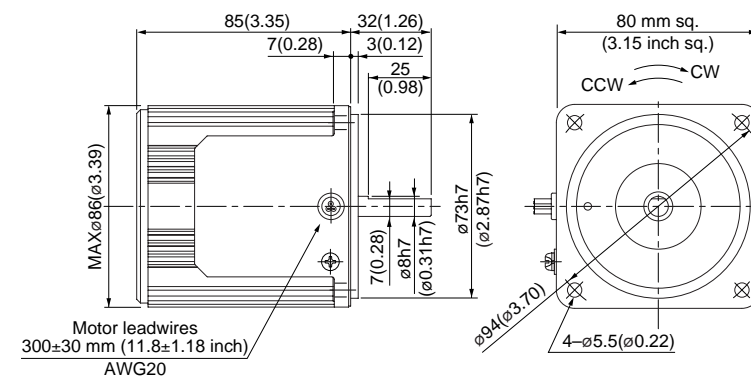


Motor (dimensions)

Scale: 1/3, Unit: mm (inch)

M8MX40S2YG(A) 2P 40 W 200 V / 220 V / 230 V

Mass
1.5 kg
3.31 lb



* Please read your User's manual carefully so that you will understand the operation and safety precautions before attempting to operate the system.

(Note) Because the dimensions may be subject to change, also check the determinate dimensions if the gear head is to be used for design.

Induction motor
Reversible motor
3-phase motor
Electromagnetic brake motor
Variable speed induction motor
Variable speed reversible motor
Variable speed electric brake single-phase motor
Variable speed unit motor
C&B motor
2-pole round shaft motor
Gear head
Gear head - inch (U.S.A.)

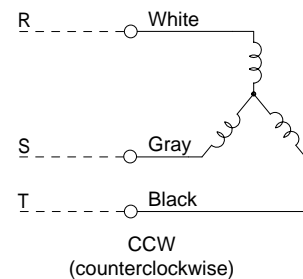
**2-pole round shaft motor
(3-phase motor)**

80 mm (3.15 inch) sq. 60 W

• Specifications

Size	Motor model No.	Number of pole (P)	Output (W)	Voltage (V)	Frequency (Hz)	Rating (min)	Rating				Starting current (A)	Starting torque N-m (oz-in)
							Input (W)	Current (A)	Speed (r/min)	Torque N-m (oz-in)		
80 mm sq.	M8MX60S2YS	2	60	200	50	Cont.	115	0.38	2325	0.24 (34.0)	0.85	0.38 (53.8)
					60		118	0.37	2750	0.20 (28.3)	0.81	0.30 (42.5)
				220	50	113	0.38	2525	0.22 (31.2)	0.92	0.44 (62.3)	
					60	105	0.33	3025	0.18 (25.5)	0.88	0.36 (51.0)	

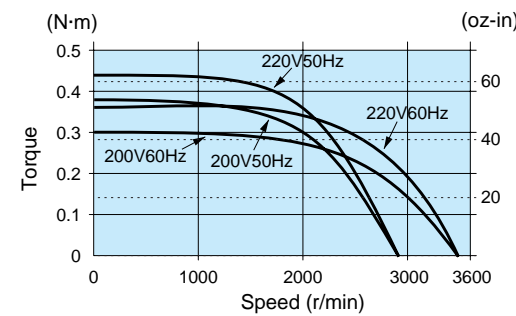
Connection diagram



Change any two lead wires of R, S and T for CW rotation.

Speed-torque characteristics

M8MX60S2YS

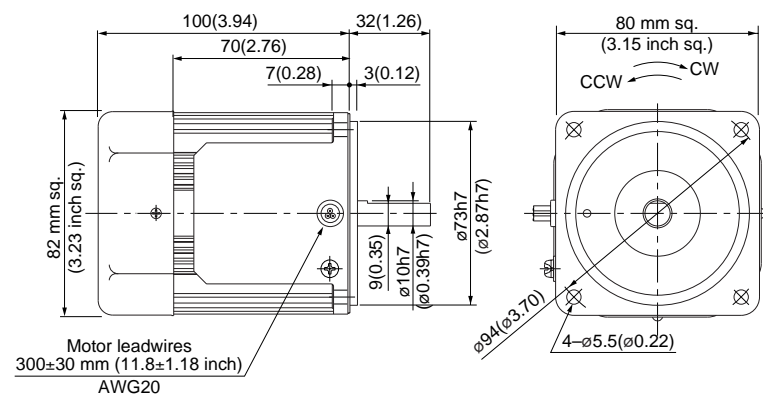


Motor (dimensions)

Scale: 1/3, Unit: mm (inch)

M8MX60S2YS 2P 60 W 200 V / 220 V (with fan)

Mass
1.8 kg
3.97 lb



**2-pole round shaft motor
(3-phase motor)**

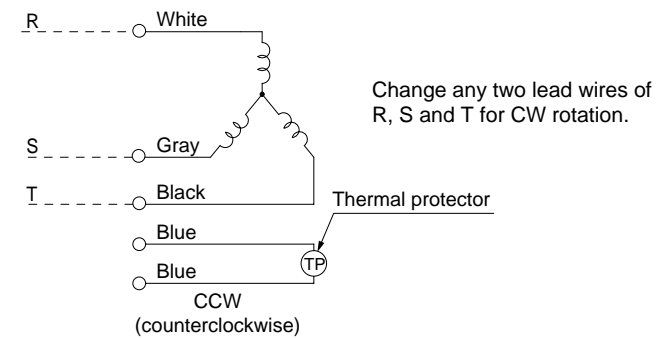
80 mm (3.15 inch) sq. 60 W

• Specifications

Size	Motor model No.	Number of pole (P)	Output (W)	Voltage (V)	Frequency (Hz)	Rating (min)	Rating				Starting current (A)	Starting torque N-m (oz-in)
							Input (W)	Current (A)	Speed (r/min)	Torque N-m (oz-in)		
80 mm sq.	M8MX60S2YG M8MX60S2YGA	2	60	200	50	Cont.	115	0.38	2325	0.24 (34.0)	0.85	0.38 (53.8)
					60		118	0.37	2750	0.20 (28.3)	0.81	0.30 (42.5)
				220	60	105	0.33	3025	0.18 (25.5)	0.88	0.36 (51.0)	
					230	105	0.33	3050	0.18 (25.5)	0.88	0.39 (55.2)	

• The models with a motor model number to which "A" is suffixed are not sold or available in Japan.

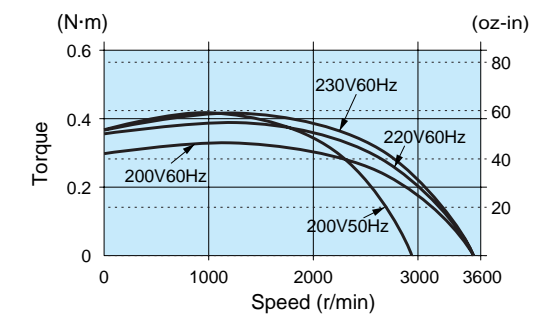
Connection diagram



(Refer to page A-58 for connection of thermal protector.)

Speed-torque characteristics

M8MX60S2YG(A)

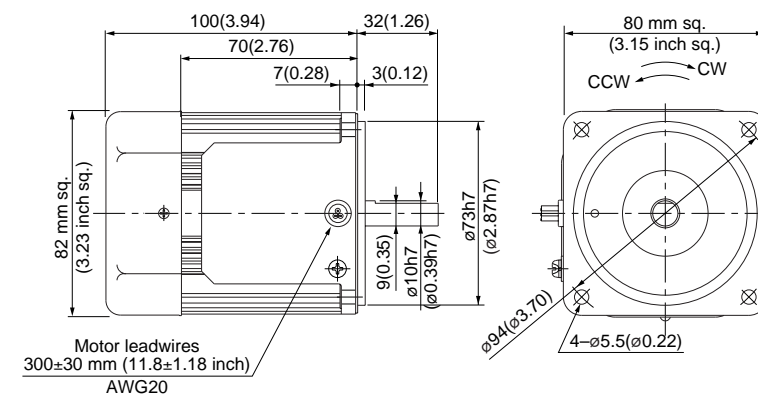


Motor (dimensions)

Scale: 1/3, Unit: mm (inch)

M8MX60S2YG(A) 2P 60 W 200 V / 220 V / 230 V (with fan)

Mass
1.8 kg
3.97 lb



* Please read your User's manual carefully so that you will understand the operation and safety precautions before attempting to operate the system.

(Note) Because the dimensions may be subject to change, also check the determinate dimensions if the gear head is to be used for design.

Induction motor
Reversible motor
3-phase motor
Electromagnetic brake motor
Variable speed induction motor
Variable speed reversible motor
Variable speed electronic brake single-phase motor
Variable speed unit motor
C&B motor
2-pole round shaft motor
Gear head
Gear head - inch (U.S.A.)

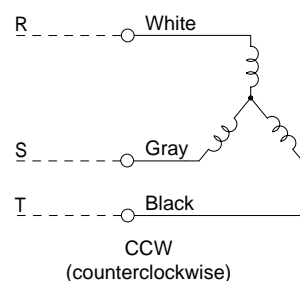
2-pole round shaft motor
(3-phase motor)

90 mm (3.54 inch) sq. 60 W

• Specifications

Size	Motor model No.	Number of pole (P)	Output (W)	Voltage (V)	Frequency (Hz)	Rating (min)	Rating				Starting current (A)	Starting torque N-m (oz-in)
							Input (W)	Current (A)	Speed (r/min)	Torque N-m (oz-in)		
90 mm sq.	M9MX60S2YS	2	60	200	50	Cont.	82	0.32	2825	0.20 (28.3)	1.9	0.96 (136)
					60		79	0.29	3400	0.16 (22.7)	1.7	0.69 (97.7)
				220	50	86	0.32	2875	0.20 (28.3)	2.1	1.1 (156)	
					60	81	0.29	3450	0.16 (22.7)	1.9	0.84 (119)	

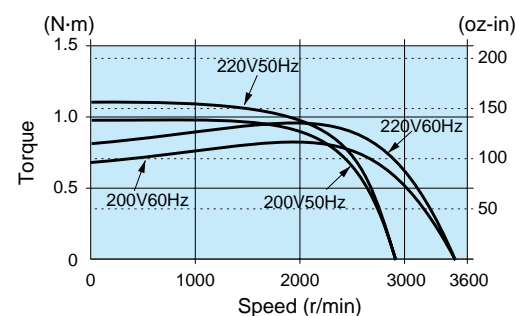
Connection diagram



Change any two lead wires of R, S and T for CW rotation.

Speed-torque characteristics

M9MX60S2YS

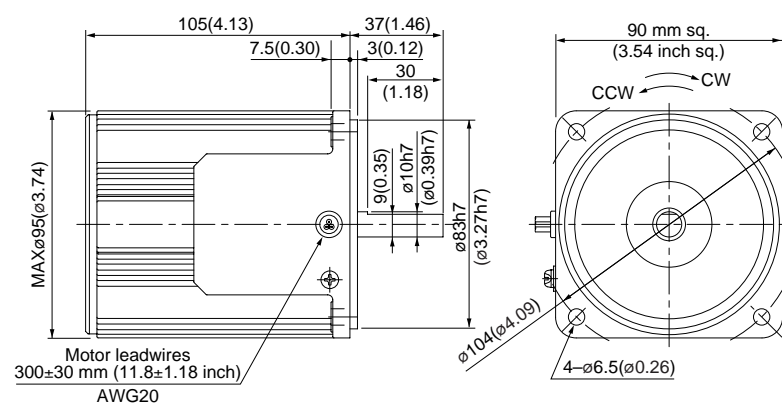


Motor (dimensions)

Scale: 1/3, Unit: mm (inch)

M9MX60S2YS 2P 60 W 200 V / 220 V (with fan)

Mass
2.4 kg
5.29 lb



2-pole round shaft motor
(3-phase motor)

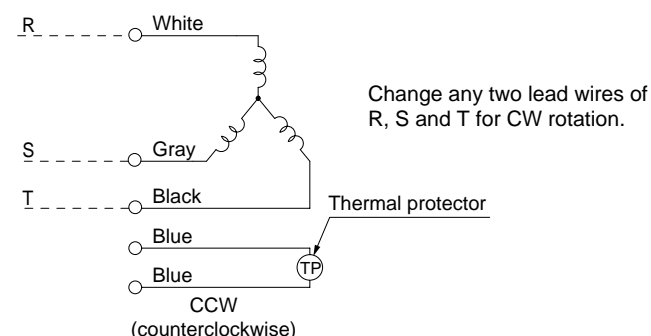
90 mm (3.54 inch) sq. 60 W

• Specifications

Size	Motor model No.	Number of pole (P)	Output (W)	Voltage (V)	Frequency (Hz)	Rating (min)	Rating				Starting current (A)	Starting torque N-m (oz-in)
							Input (W)	Current (A)	Speed (r/min)	Torque N-m (oz-in)		
90 mm sq.	M9MX60S2YG M9MX60S2YGA	2	60	200	50	Cont.	87	0.32	2825	0.20 (28.3)	1.9	0.96 (136)
					60		87	0.31	3400	0.17 (24.1)	1.7	0.69 (97.7)
				220	60	87	0.30	3450	0.17 (24.1)	1.9	0.84 (119)	
					230	60	87	0.30	3450	0.17 (24.1)	1.9	0.90 (127)

• The models with a motor model number to which "A" is suffixed are not sold or available in Japan.

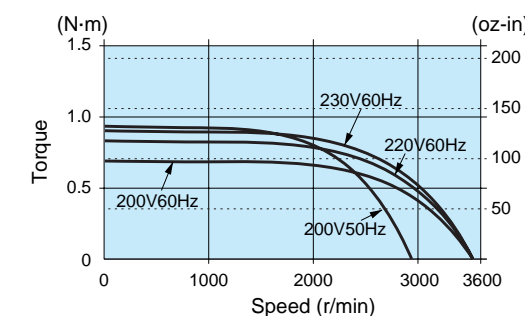
Connection diagram



Change any two lead wires of R, S and T for CW rotation.

Speed-torque characteristics

M9MX60S2YG(A)

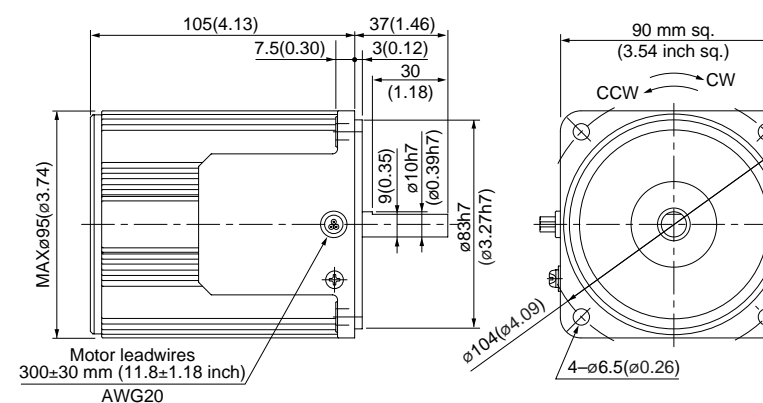


Motor (dimensions)

Scale: 1/3, Unit: mm (inch)

M9MX60S2YG(A) 2P 60W 200 V / 220 V / 230 V (with fan)

Mass
2.4 kg
5.29 lb



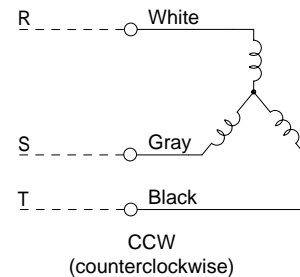
2-pole round shaft motor (3-phase motor)

90 mm (3.54 inch) sq. **90 W**

Specifications

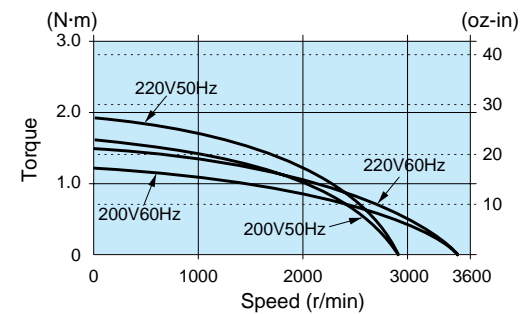
Size	Motor model No.	Number of pole (P)	Output (W)	Voltage (V)	Frequency (Hz)	Rating (min)	Rating				Starting current (A)	Starting torque N-m (oz-in)		
							Input (W)	Current (A)	Speed (r/min)	Torque N-m (oz-in)				
90 mm sq.	M9MZ90S2YS	2	90	200	50	Cont.	144	0.71	2700	0.31 (43.9)	2.3	1.6 (227)		
							134	0.53	3225	0.26 (36.8)	2.1	1.2 (170)		
							220	50	167	0.96	2750	0.31 (43.9)	2.5	1.9 (269)
							60	137	0.59	3300	0.25 (35.4)	2.3	1.4 (198)	

Connection diagram



Speed-torque characteristics

M9MZ90S2YS



2-pole round shaft motor (3-phase motor)

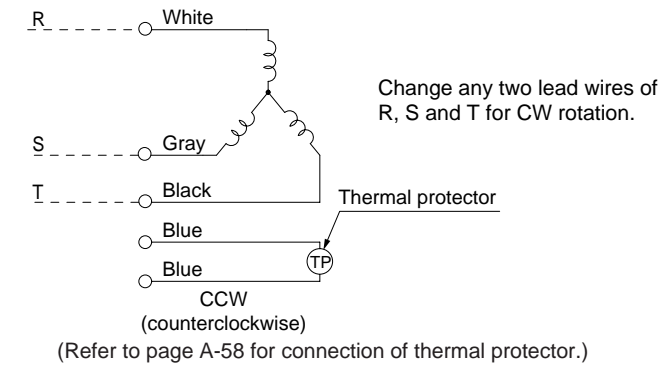
90 mm (3.54 inch) sq. **90 W**

Specifications

Size	Motor model No.	Number of pole (P)	Output (W)	Voltage (V)	Frequency (Hz)	Rating (min)	Rating				Starting current (A)	Starting torque N-m (oz-in)		
							Input (W)	Current (A)	Speed (r/min)	Torque N-m (oz-in)				
90 mm sq.	M9MZ90S2YG M9MZ90S2YGA	2	90	200	50	Cont.	144	0.71	2700	0.32 (45.3)	2.3	1.6 (227)		
							134	0.53	3225	0.27 (38.2)	2.1	1.2 (170)		
							220	60	137	0.59	3300	0.26 (36.8)	2.3	1.4 (198)
							230	60	142	0.65	3325	0.26 (36.8)	2.4	1.5 (212)

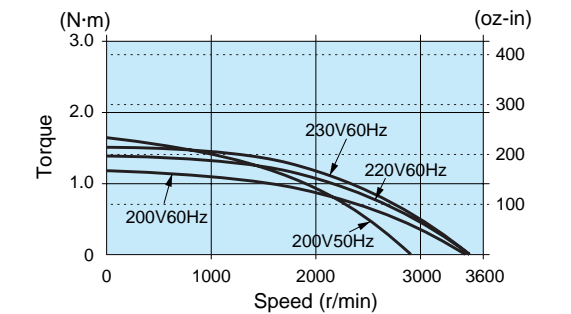
• The models with a motor model number to which "A" is suffixed are not sold or available in Japan.

Connection diagram



Speed-torque characteristics

M9MZ90S2YG(A)

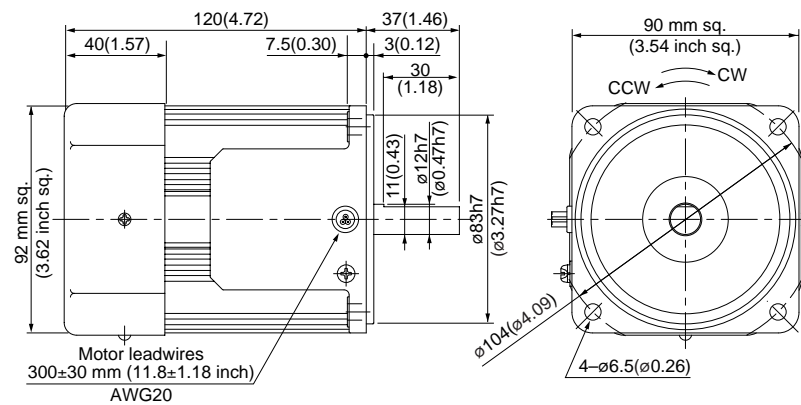


Motor (dimensions)

Scale: 1/3, Unit: mm (inch)

M9MZ90S2YS 2P 90 W 200 V / 220 V (with fan)

Mass
2.7 kg
5.95 lb

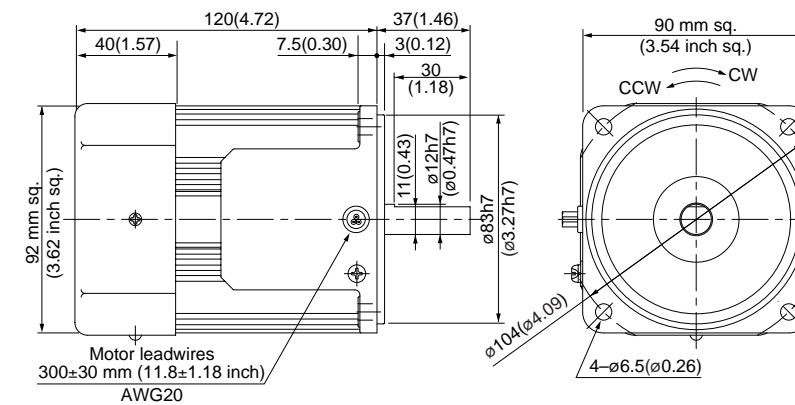


Motor (dimensions)

Scale: 1/3, Unit: mm (inch)

M9MZ90S2YG(A) 2P 90 W 200 V / 220 V / 230 V (with fan)

Mass
2.7 kg
5.95 lb



Induction motor
Reversible motor
3-phase motor
Electromagnetic brake motor
Variable speed induction motor
Variable speed reversible motor
Variable speed electric single-phase motor
Variable speed unit motor
C&B motor
2-pole round shaft motor
Gear head
Gear head - inch (U.S.A.)

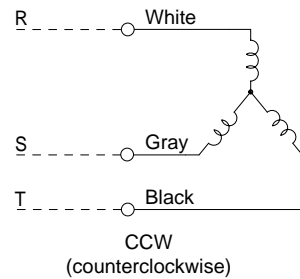
2-pole round shaft motor (3-phase motor)

90 mm (3.54 inch) sq. 150 W

Specifications

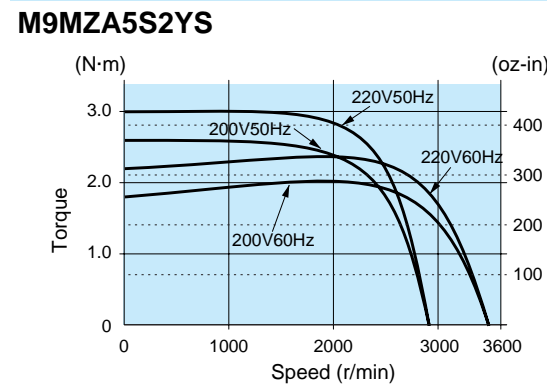
Size	Motor model No.	Number of pole (P)	Output (W)	Voltage (V)	Frequency (Hz)	Rating (min)	Rating				Starting current (A)	Starting torque N-m (oz-in)
							Input (W)	Current (A)	Speed (r/min)	Torque N-m (oz-in)		
90 mm sq.	M9MZA5S2YS	2	150	200	50	Cont.	235	1.1	2850	0.51 (72.2)	5.2	2.6 (368)
							227	0.81	3400	0.43 (60.9)	4.7	1.8 (255)
							274	1.5	2875	0.50 (70.8)	5.4	3.0 (425)
							233	0.87	3450	0.43 (60.9)	4.8	2.2 (312)

Connection diagram



Change any two lead wires of R, S and T for CW rotation.

Speed-torque characteristics

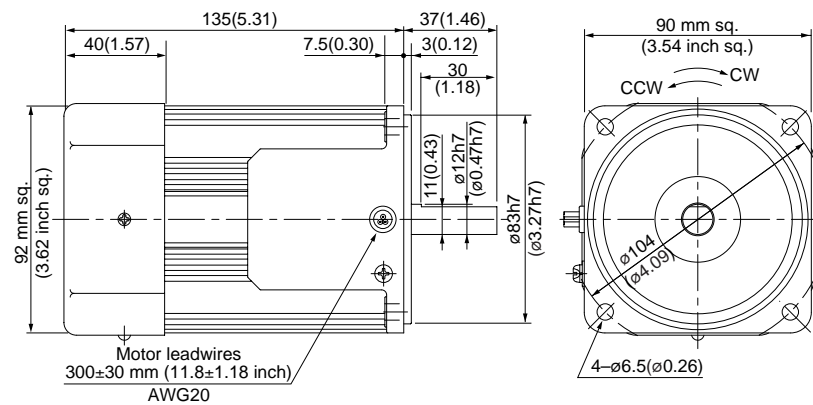


Motor (dimensions)

Scale: 1/3, Unit: mm (inch)

M9MZA5S2YS 2P 150 W 200 V / 220 V (with fan)

Mass
3.2 kg
7.05 lb



2-pole round shaft motor (3-phase motor)

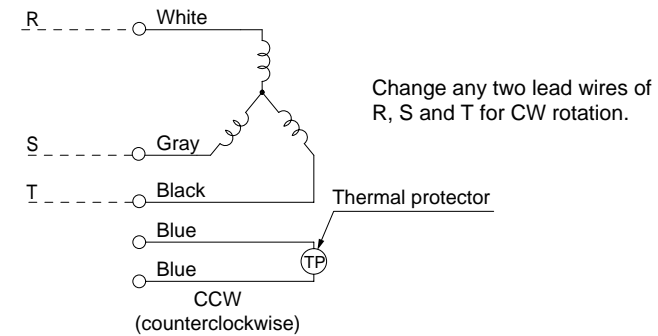
90 mm (3.54 inch) sq. 150 W

Specifications

Size	Motor model No.	Number of pole (P)	Output (W)	Voltage (V)	Frequency (Hz)	Rating (min)	Rating				Starting current (A)	Starting torque N-m (oz-in)
							Input (W)	Current (A)	Speed (r/min)	Torque N-m (oz-in)		
90 mm sq.	M9MZA5S2YG M9MZA5S2YGA	2	150	200	50	Cont.	236	1.3	2850	0.50 (70.8)	5.2	2.5 (354)
							207	0.84	3425	0.42 (59.5)	4.7	1.8 (255)
							218	0.99	3475	0.41 (58.1)	4.8	2.2 (312)
							229	1.2	3475	0.41 (58.1)	4.8	2.3 (326)
							200	0.84	3425	0.42 (59.5)	4.7	1.8 (255)

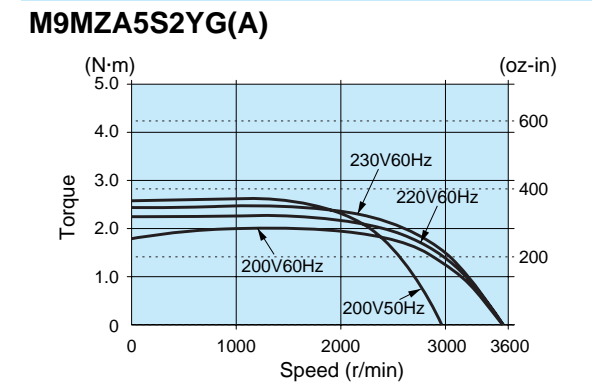
• The models with a motor model number to which "A" is suffixed are not sold or available in Japan.

Connection diagram



(Refer to page A-58 for connection of thermal protector.)

Speed-torque characteristics

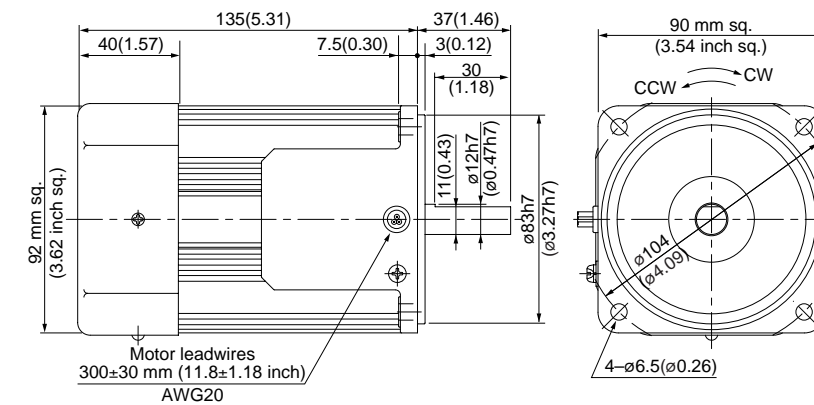


Motor (dimensions)

Scale: 1/3, Unit: mm (inch)

M9MZA5S2YG(A) 2P 150 W 200 V / 220 V / 230 V (with fan)

Mass
3.2 kg
7.05 lb



* Please read your User's manual carefully so that you will understand the operation and safety precautions before attempting to operate the system.

(Note) Because the dimensions may be subject to change, also check the determinate dimensions if the gear head is to be used for design.

Induction motor
Reversible motor
3-phase motor
Electromagnetic brake motor
Variable speed induction motor
Variable speed reversible motor
Variable speed electronic brake single-phase motor
Variable speed unit motor
C&B motor
2-pole round shaft motor
Gear head
Gear head - inch (U.S.A.)

